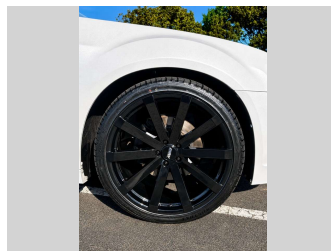
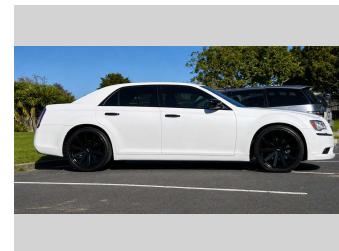
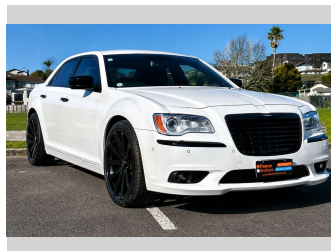


2013 Chrysler 300C LTD 3.6L V6 22" ALLOYS



Purchase Price **\$23,975**
Includes GST, Registration & Licensing

Finance may be available on this vehicle. Ask one of our friendly staff for more information.



Gain peace of mind with Mechanical Breakdown Insurance. **Ask us how.**



Top features

None Listed

Body Style
4 door, Sedan

Odometer
112,507 km

Engine
3600 cc, In-Line

Fuel Type
Petrol

Transmission
Automatic, Rear Wheel

Wheels
-

VIN
2C3CCATG2DH59280B

Interior
Black

Safety



Based on 2025 VSRR rating

Reg No.
-

Ext Colour
white

History
-

Seats
5 seats, Fabric

CO2 Emissions
★ ★ ☆ ☆ ☆ ☆
253 grams/km


Energy Economy
★ ☆ ☆ ☆ ☆ ☆
Annual fuel cost not available

Cost per year is an estimate based on petrol price of \$2.80 per litre and an average distance of 14000 km. Emissions and Energy Economy figures standardised to 3P WLTP.

Stock ID: 40872



Pearce Brothers | Phone 09 2777 335 | Email natalia@pearcebrothers.co.nz
122 Great South Road, Papatoetoe, Auckland 2025, New Zealand
www.pearcebrothers.co.nz



★★★★★
4.70 | 1394 reviews