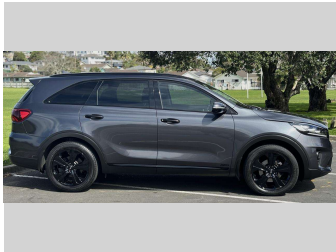


2019 Kia Sorento LTD 2.2TD 4WD



Purchase Price

Includes GST, Registration & Licensing

\$25,975

Finance may be available on this vehicle. Ask one of our friendly staff for more information.



Gain peace of mind with Mechanical Breakdown Insurance. **Ask us how.**



Top features

None Listed

Body Style

5 door, SUV

Odometer

139,048 km

Engine

2199 cc, In-Line

Fuel Type

Diesel

Transmission

Automatic, 4WD

Wheels

-

VIN

KNAPJJ1BSK5503HHH

Interior

-

Safety



Based on 2024 VSRR rating

Reg No.

-

Ext Colour

Grey

History

NZ New

Seats

7 seats

CO2 Emissions

★★★★☆

198 grams/km

Energy Economy

★★★☆☆

**Annual fuel cost of \$3,160
7.5L per 100km**

Cost per year is an estimate based on diesel price of \$2.00 per litre and an average distance of 14000 km. Includes Road User Charges (RUC). Emissions and Energy Economy figures standardised to 3P WLTP.

Stock ID: 35513



Pearce Brothers | Phone 09 2777 335 | Email natalia@pearcebrothers.co.nz
122 Great South Road, Papatoetoe, Auckland 2025, New Zealand
www.pearcebrothers.co.nz

