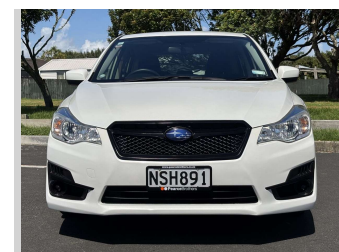
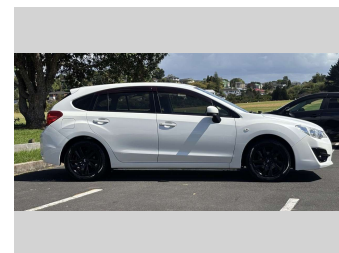


# 2016 Subaru Impreza 1.6 PETROL HOT HATCH



**Purchase Price** **\$10,975**  
Includes GST, Registration & Licensing

Finance may be available on this vehicle. Ask one of our friendly staff for more information.



Gain peace of mind with Mechanical Breakdown Insurance. **Ask us how.**



**Top features**

None Listed

Body Style  
**5 door, Hatchback**

Odometer  
**114,089 km**

Engine  
**1590 cc, In-Line**

Fuel Type  
**Petrol**


Transmission  
**Automatic, All Wheel Drive**

Wheels  
-

VIN  
**7AT0GF09X2103401W**

Interior  
**Black/ Grey**

Safety



Based on 2025 UCSR rating for 12-16 models

Reg No.  
**NSH891**

Ext Colour  
**white**

History  
**Ex-Overseas**

Seats  
**5 seats, Deluxe cloth**

CO2 Emissions  
**★★★★☆**  
**162 grams/km**

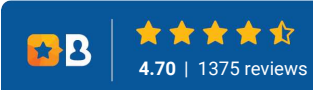
Energy Economy  
**★★★☆☆**  
**Annual fuel cost of \$2,700**  
**6.9L per 100km**

Cost per year is an estimate based on petrol price of \$2.80 per litre and an average distance of 14000 km. Emissions and Energy Economy figures standardised to 3P WLTP.

**Stock ID: 40139**



Pearce Brothers | Phone 09 2777 335 | Email natalia@pearcebrothers.co.nz  
122 Great South Road, Papatoetoe, Auckland 2025, New Zealand  
www.pearcebrothers.co.nz



★★★★★  
4.70 | 1375 reviews