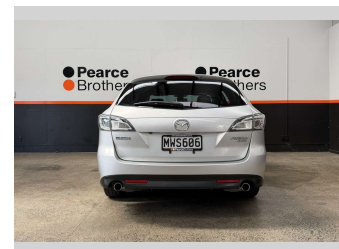
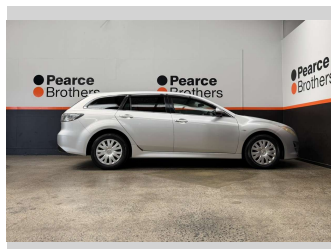
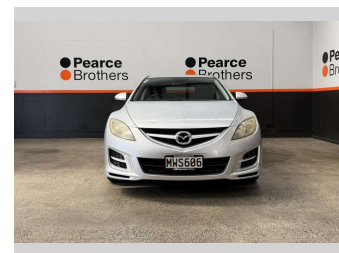
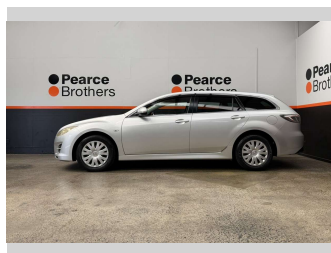
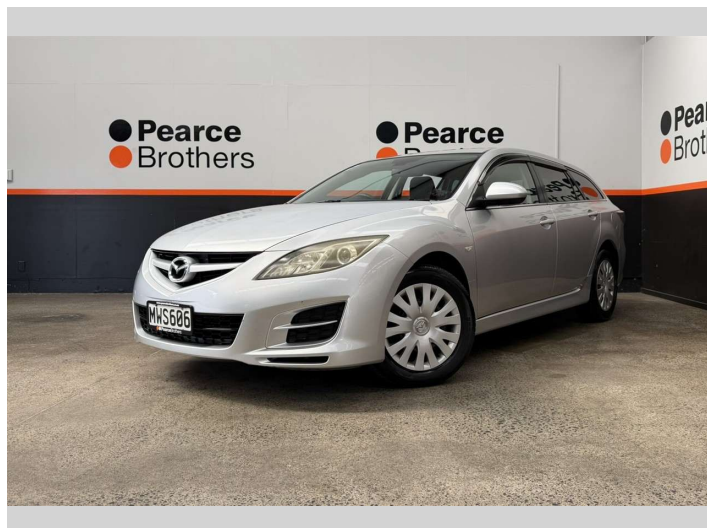


2008 Mazda Atenza 2.5P, WAGON, LOW KMS



Purchase Price **\$9,990**
Includes GST, Registration & Licensing

Finance may be available on this vehicle. Ask one of our friendly staff for more information.



UDC
New Zealand's Finance Company
MARAC
MEANS FINANCE

Gain peace of mind with Mechanical Breakdown Insurance. **Ask us how.**



autosure
INSURANCE

- Top features**
- » Air Bag(s)
 - » Air Conditioning
 - » Car Stereo
 - » Central Locking
 - » Central Locking
 - » Climate Control
 - » Electric Mirrors
 - » Electric Mirrors
 - » Electric Windows
 - » LOW KMS
 - » Power Steering
 - » Remote Locking
 - » Reverse Camera
 - » Tinted Windows

Body Style
Station Wagon

Odometer
104,086 km

Engine
2480 cc, Diesel


Fuel Type
Petrol

Transmission
Automatic

Wheels
-

VIN
7AT0C139X19157855

Interior
-

Safety

Based on 2025 UCSR rating for 08-11 models

Reg No.
MWS606

Ext Colour
Silver

History
Ex-Overseas

Seats
5 seats

CO2 Emissions
★ ★ ☆ ☆ ☆ ☆
255 grams/km

Energy Economy
★ ☆ ☆ ☆ ☆ ☆
Annual fuel cost of \$4,160
10.6L per 100km

Cost per year is an estimate based on petrol price of \$2.80 per litre and an average distance of 14000 km. Emissions and Energy Economy figures standardised to 3P WLTP.

Stock ID: 32596