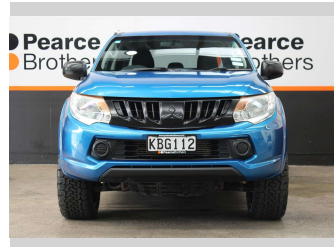


2016 Mitsubishi Triton GLXR, HARD LID, LOW KM'S



Purchase Price **\$23,990**
Includes GST, Registration & Licensing

Finance may be available on this vehicle. Ask one of our friendly staff for more information.



UDC
New Zealand's Finance Company
M.A.R.A.C.
MEANS FINANCE

Gain peace of mind with Mechanical Breakdown Insurance. **Ask us how.**



autosure
INSURANCE

Top features

- » Air Bag(s)
- » Air Conditioning
- » Alloys
- » Bluetooth
- » Car Stereo
- » Central Locking
- » Central Locking
- » Cruise Control
- » Cruise Control
- » Electric Mirrors
- » Electric Mirrors
- » Electric Windows
- » Power Steering
- » Remote Locking
- » Reverse Camera
- » Tinted Windows
- » Turbo

Body Style
4 door, Ute

Odometer
55,279 km

Engine
2442 cc, Diesel

Fuel Type
Diesel


Transmission
MANUAL

Wheels
-

VIN
MMAJJKK10GH03XXXX

Interior
-

Safety



Based on 2025 UCSR rating for 15-23 models

Reg No.
KBG112

Ext Colour
Blue

History
NZ New

Seats
5 seats

CO2 Emissions
★★★★☆☆
214 grams/km

Energy Economy
★★★★☆☆
Annual fuel cost of \$3,360
8.2L per 100km

Cost per year is an estimate based on diesel price of \$2.00 per litre and an average distance of 14000 km. Includes Road User Charges (RUC). Emissions and Energy Economy figures standardised to 3P WLTP.

Stock ID: 32556