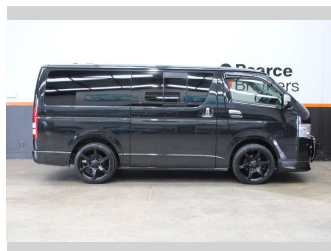
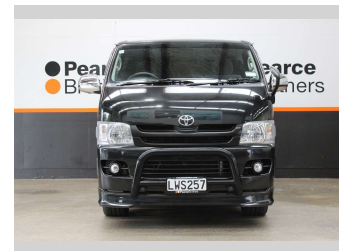


2008 Toyota Hiace SUPER GL 2.0P 6 SEATER



Purchase Price

Includes GST, Registration & Licensing

\$19,990

Finance may be available on this vehicle. Ask one of our friendly staff for more information.



Gain peace of mind with Mechanical Breakdown Insurance. **Ask us how.**



Top features

- » Air Bag(s)
- » Air Conditioning
- » Alloys
- » Car Stereo
- » Central Locking
- » Central Locking
- » Cruise Control
- » Electric Mirrors
- » Electric Mirrors
- » Electric Windows
- » Power Steering
- » Remote Locking
- » Tinted Windows
- » Towbar

Body Style

People Movers

Odometer

173,616 km

Engine

1990 cc, Diesel

Fuel Type

Petrol

Transmission

Automatic

Wheels

-

VIN

7AT0H60FX18073074

Interior

-

Safety



Based on 2025 UCSR rating for 05-19 models

Reg No.

LWS257

Ext Colour

Black

History

Ex-Overseas

Seats

5 seats

CO2 Emissions

★ ★ ☆ ☆ ☆ ☆

241 grams/km

Energy Economy

★ ☆ ☆ ☆ ☆ ☆

Annual fuel cost of \$4,040

10.3L per 100km

Cost per year is an estimate based on petrol price of \$2.80 per litre and an average distance of 14000 km. Emissions and Energy Economy figures standardised to 3P WLTP.

Stock ID: 31998



Pearce Brothers | Phone 09 279 2479 | Email daniel@pearcebrothers.co.nz
579 Great South Road, Manukau, Auckland 2025, New Zealand
www.pearcebrothers.co.nz