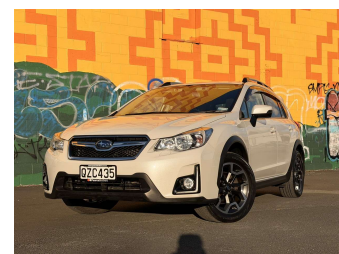
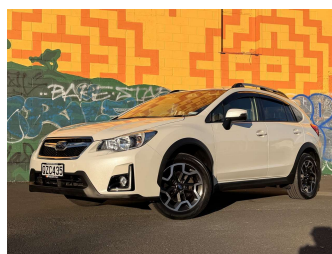
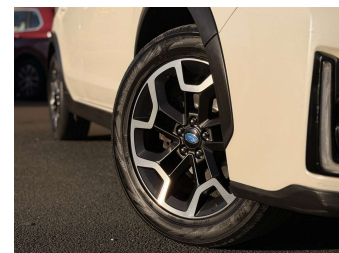


2016 Subaru XV 2.0 PETROL CROSSOVER AWD



Purchase Price

\$9,995

Includes GST, Registration & Licensing

Finance may be available on this vehicle. Ask one of our friendly staff for more information.

MARAC

Gain peace of mind with Mechanical Breakdown Insurance. **Ask us how.**

autosure
INSURANCE

Top features

None Listed

Body Style

5 door, Station Wagon

Odometer

141,226 km

Engine

1995 cc, In-Line

Fuel Type

Petrol

Transmission

Automatic, 4WD

Wheels

-

VIN

7AT0GF1XX24110531

Interior

Black

Safety



Based on 2025 UCSR rating for 12-16 models

Reg No.

QZC435

Ext Colour

white

History

Ex-Overseas, 3 owners

Seats

5 seats, Fabric

CO2 Emissions

★★★★☆

163 grams/km

Energy Economy

★★★☆☆

**Annual fuel cost of \$2,740
7L per 100km**

Cost per year is an estimate based on petrol price of \$2.80 per litre and an average distance of 14000 km. Emissions and Energy Economy figures standardised to 3P WLTP.

Stock ID: 40002

Pearce Brothers

Pearce Brothers | Phone 09 579 6454 | Email antoni@pearcebrothers.co.nz
393 Neilson Street, Onehunga, Auckland 1061, New Zealand
www.pearcebrothers.co.nz