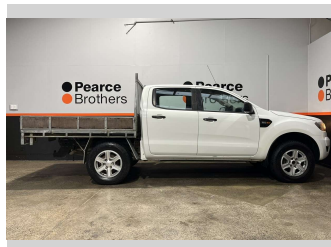
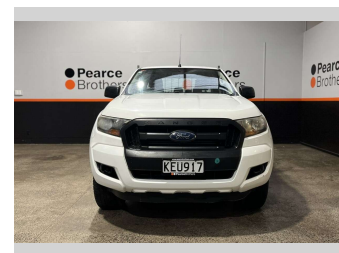
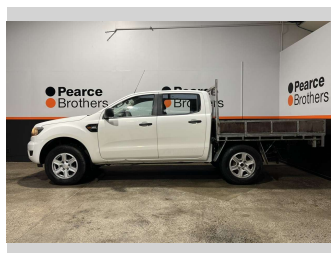



# 2016 Ford Ranger XL, FLATDECK, 3.2D, NZ NEW




**Purchase Price** **\$18,990**  
Includes GST, Registration & Licensing

Finance may be available on this vehicle. Ask one of our friendly staff for more information.



Gain peace of mind with Mechanical Breakdown Insurance. **Ask us how.**



- Top features**
- » Air Bag(s)
  - » Air Conditioning
  - » Alloys
  - » Alloys
  - » Bluetooth
  - » BOV
  - » Central Locking
  - » Central Locking
  - » Climate Control
  - » Cruise Control
  - » Cruise Control
  - » Electric Mirrors
  - » Electric Windows
  - » Flat Deck
  - » NZ NEW
  - » Power Steering
  - » Remote Locking
  - » Towbar

Body Style  
**4 door, Ute**

Odometer  
**205,863 km**

Engine  
**3198 cc, Diesel**


Fuel Type  
**Diesel**

Transmission  
**Automatic**

Wheels  
-

VIN  
**MNAUMFF50GW640642**

Interior  
-

Safety  
  
Based on 2025 VSRR rating

Reg No.  
**KEU917**

Ext Colour  
**White**

History  
**NZ New**

Seats  
**5 seats**

CO2 Emissions  
**★ ★ ☆ ☆ ☆ ☆**  
**248 grams/km**

Energy Economy  
**★ ★ ☆ ☆ ☆ ☆**  
**Annual fuel cost of \$3,700**  
**9.4L per 100km**

Cost per year is an estimate based on diesel price of \$2.00 per litre and an average distance of 14000 km. Includes Road User Charges (RUC). Emissions and Energy Economy figures standardised to 3P WLTP.

**Stock ID: 33209**



Pearce Brothers | Phone 09 250 1987 | Email ethan@pearcebrothers.co.nz  
155 Cavendish Drive, Manukau, Auckland 2104, New Zealand  
www.pearcebrothers.co.nz