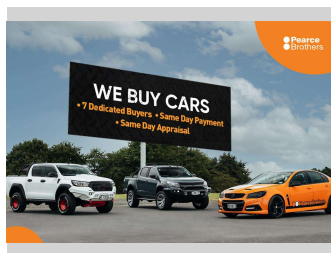



# 2012 Nissan JUKE 1.6L, BLACKED OUT, ALLOYS




**Purchase Price** **\$9,990**  
Includes GST, Registration & Licensing

Finance may be available on this vehicle. Ask one of our friendly staff for more information.



Gain peace of mind with Mechanical Breakdown Insurance. **Ask us how.**



- Top features**
- » ABS Brakes
  - » Cruise Control
  - » Electric Mirrors
  - » Electric Windows
  - » LOW KMS
  - » NZ NEW
  - » Power Steering

Body Style  
**Hatchback**

Odometer  
**92,702 km**

Engine  
**1598 cc, Internal Combustion**

Fuel Type  
**Petrol**

Transmission  
**Automatic**

Wheels  
-

VIN  
**SJNFBAF15A6265833**

Interior  
-

Safety  
-

Reg No.  
**HEW225**

Ext Colour  
**Silver**

History  
**NZ New**

Seats  
**5 seats**

CO2 Emissions  
-

Energy Economy  
-

**Stock ID: 25348**



Pearce Brothers | Phone 09 250 1987 | Email joel@pearcebrothers.co.nz  
155 Cavendish Drive, Manukau, Auckland 2104, New Zealand  
www.pearcebrothers.co.nz