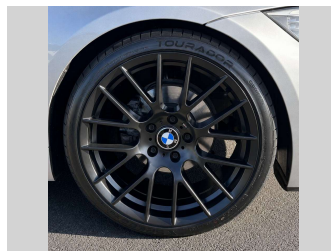
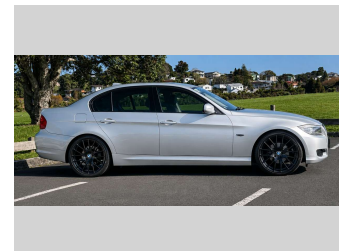



2010 BMW 320i 19" M ALLOYS



Purchase Price **\$11,975**
Includes GST, Registration & Licensing

Finance may be available on this vehicle. Ask one of our friendly staff for more information.



Gain peace of mind with Mechanical Breakdown Insurance. **Ask us how.**



Top features

None Listed

Body Style
4 door, Sedan

Odometer
117,736 km

Engine
1990 cc, In-Line

Fuel Type
Petrol


Transmission
Automatic

Wheels
-

VIN
WBAPG36090NM94281

Interior
Black

Safety



Based on 2025 UCSR rating for 05-13 models

Reg No.
KBW33

Ext Colour
Silver

History
Ex-Overseas, 4 owners

Seats
5 seats, Leather

CO2 Emissions
★★★★☆
188 grams/km

Energy Economy
★★★★☆
Annual fuel cost of \$3,060
7.8L per 100km

Cost per year is an estimate based on petrol price of \$2.80 per litre and an average distance of 14000 km. Emissions and Energy Economy figures standardised to 3P WLTP.

Stock ID: 40631



Pearce Brothers | Phone 09 2777 335 | Email natalia@pearcebrothers.co.nz
122 Great South Road, Papatoetoe, Auckland 2025, New Zealand
www.pearcebrothers.co.nz

