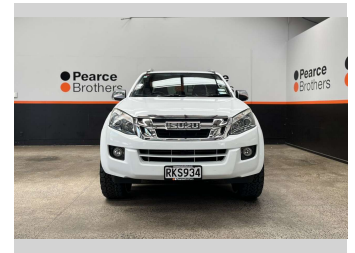


# 2017 Isuzu D-Max LS-T, BRAND NEW 20" MAGS,



## Purchase Price

Includes GST, Registration & Licensing

# \$26,990

Finance may be available on this vehicle. Ask one of our friendly staff for more information.



Gain peace of mind with Mechanical Breakdown Insurance. **Ask us how.**



## Top features

- » Air Bag(s)
- » Air Conditioning
- » Alloys
- » Alloys
- » Bluetooth
- » Car Stereo
- » Central Locking
- » Central Locking
- » Climate Control
- » Cruise Control
- » Cruise Control
- » Digital Display
- » Electric Mirrors
- » Electric Mirrors
- » Electric Windows
- » Fog Lights
- » Heated Seats
- » Leather Seats

Body Style

**4 door, Ute**

Odometer

**131,488 km**

Engine

**2999 cc, Diesel**

Fuel Type

**Diesel**

Transmission

**Automatic**

Wheels

-

VIN

**MPATFR85JGT002214**

Interior

-

Safety



Based on 2025 VSRR rating

Reg No.

**RKS934**

Ext Colour

**White**

History

**NZ New**

Seats

**5 seats**

CO2 Emissions

★ ★ ☆ ☆ ☆ ☆

**244 grams/km**

Energy Economy

★ ★ ☆ ☆ ☆ ☆

**Annual fuel cost of \$3,670  
9.3L per 100km**

Cost per year is an estimate based on diesel price of \$2.00 per litre and an average distance of 14000 km. Includes Road User Charges (RUC). Emissions and Energy Economy figures standardised to 3P WLTP.

**Stock ID: 32089**

**Pearce Brothers**

Pearce Brothers | Phone 09 250 1987 | Email [ethan@pearcebrothers.co.nz](mailto:ethan@pearcebrothers.co.nz)  
155 Cavendish Drive, Manukau, Auckland 2104, New Zealand  
[www.pearcebrothers.co.nz](http://www.pearcebrothers.co.nz)