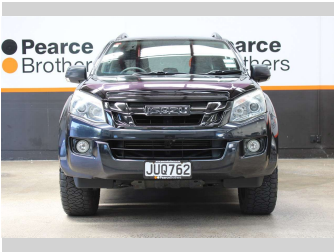


2016 Isuzu D-Max LS-T MAVERICK, BLACKOUT



Purchase Price

Includes GST, Registration & Licensing

\$22,990

Finance may be available on this vehicle. Ask one of our friendly staff for more information.



Gain peace of mind with Mechanical Breakdown Insurance. **Ask us how.**



Top features

- » Air Bag(s)
- » Air Conditioning
- » Alloys
- » Bluetooth
- » Car Stereo
- » Central Locking
- » Central Locking
- » Cruise Control
- » Cruise Control
- » Electric Mirrors
- » Electric Mirrors
- » Electric Windows
- » Hard Top
- » Power Steering
- » Remote Locking
- » Reverse Camera
- » Reverse Camera
- » Tinted Windows

Body Style

4 door, Ute

Odometer

176,036 km

Engine

2999 cc, Diesel

Fuel Type

Diesel

Transmission

Automatic

Wheels

-

VIN

MPATFR85JFT007336

Interior

-

Safety



Based on 2025 VSRR rating

Reg No.

JUQ762

Ext Colour

Black

History

NZ New

Seats

5 seats

CO2 Emissions

★ ★ ☆ ☆ ☆ ☆

244 grams/km

Energy Economy

★ ★ ☆ ☆ ☆ ☆

**Annual fuel cost of \$3,670
9.3L per 100km**

Cost per year is an estimate based on diesel price of \$2.00 per litre and an average distance of 14000 km. Includes Road User Charges (RUC). Emissions and Energy Economy figures standardised to 3P WLTP.

Stock ID: 32128



Pearce Brothers | Phone 09 279 2479 | Email daniel@pearcebrothers.co.nz
579 Great South Road, Manukau, Auckland 2025, New Zealand
www.pearcebrothers.co.nz