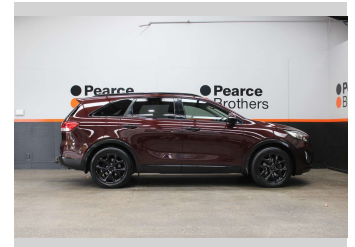
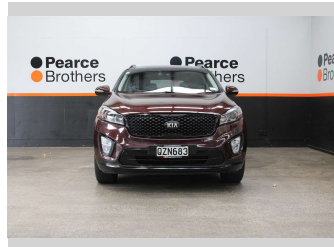
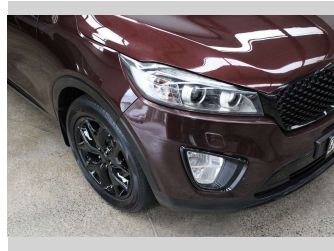


2016 Kia Sorento URBAN PREMIUM 3.3P



Purchase Price

\$18,990

Includes GST, Registration & Licensing

Finance may be available on this vehicle. Ask one of our friendly staff for more information.



Gain peace of mind with Mechanical Breakdown Insurance. **Ask us how.**



Top features

- » Air Bag(s)
- » Air Conditioning
- » Alloys
- » Bluetooth
- » Car Stereo
- » Central Locking
- » Central Locking
- » Cruise Control
- » Cruise Control
- » Electric Mirrors
- » Electric Mirrors
- » Electric Windows
- » Fog Lights
- » Heated Seats
- » Keyless Entry
- » Parking Sensors
- » Power Steering
- » Push Button Start

Body Style

5 door, Wagon

Odometer

171,458 km

Engine

3342 cc, Diesel

Fuel Type

Petrol

Transmission

Automatic

Wheels

-

VIN

KNAPH814MG5262XXX

Interior

-

Safety



Based on 2025 VSRR rating

Reg No.

QZN683

Ext Colour

Red

History

NZ New

Seats

7 seats

CO2 Emissions

★ ★ ☆ ☆ ☆ ☆ ☆

256 grams/km

Energy Economy

★ ☆ ☆ ☆ ☆ ☆ ☆

**Annual fuel cost of \$4,310
11L per 100km**

Cost per year is an estimate based on petrol price of \$2.80 per litre and an average distance of 14000 km. Emissions and Energy Economy figures standardised to 3P WLTP.

Stock ID: 32721

Pearce Brothers

Pearce Brothers | Phone 09 279 2479 | Email daniel@pearcebrothers.co.nz
579 Great South Road, Manukau, Auckland 2025, New Zealand
www.pearcebrothers.co.nz