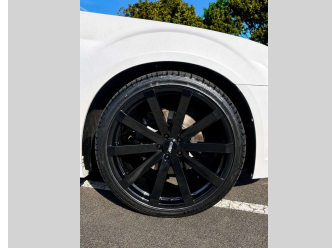
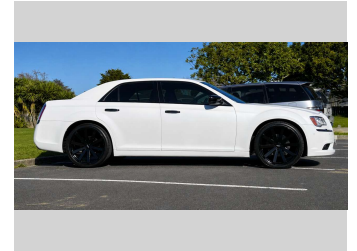



# 2013 Chrysler 300C LTD 3.6L V6 22" ALLOYS



**Purchase Price** **\$23,975**

Includes GST  
Excludes on-road costs of \$375

Finance may be available on this vehicle. Ask one of our friendly staff for more information.



Gain peace of mind with Mechanical Breakdown Insurance. **Ask us how.**



**Top features**

None Listed

**Body Style**  
4 door, Sedan

**Odometer**  
112,507 km

**Engine**  
3600 cc, In-Line

**Fuel Type**  
Petrol


**Transmission**  
Automatic, Rear Wheel

**Wheels**  
-

**VIN**  
2C3CCATG2DH592803

**Interior**  
Black

**Safety**



Based on 2025 VSRR rating

**Reg No.**  
-

**Ext Colour**  
white

**History**  
-

**Seats**  
5 seats, Fabric

**CO2 Emissions**  
★ ★ ☆ ☆ ☆ ☆  
253 grams/km


**Energy Economy**  
★ ☆ ☆ ☆ ☆ ☆  
Annual fuel cost not available

Cost per year is an estimate based on petrol price of \$2.80 per litre and an average distance of 14000 km. Emissions and Energy Economy figures standardised to 3P WLTP.

**Stock ID: 40610**



Pearce Brothers | Phone 09 2777 335 | Email natalia@pearcebrothers.co.nz  
122 Great South Road, Papatoetoe, Auckland 2025, New Zealand  
www.pearcebrothers.co.nz



★★★★★  
4.70 | 1388 reviews