

2014 Ford Ranger XL, 4X4, FLAT DECK TRAY!



Pearce Brothers
THE EASY WAY TO FINANCE YOUR NEXT CAR

SUPER FAST AND COMPETITIVE

LOW OR NO DEPOSIT AVAILABLE

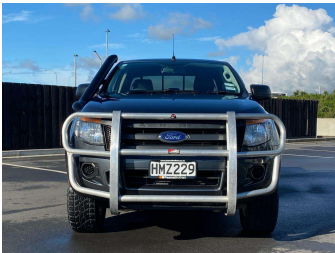
USE YOUR TRADE-IN AS A DEPOSIT

finance **NOW**

MARAC

UDC

WE USE ALL THE MAIN FINANCIERS AND BECAUSE WE'RE BIG THEY LOOK AFTER OUR CUSTOMERS WITH GREAT RATES AND FAST APPROVAL. CALL ONE OF OUR FRIENDLY TEAM NOW OR APPLY ONLINE.



Purchase Price

\$24,975

Includes GST, Registration & Licensing

Indicative repayments

\$106.56 per week*

Based on a 60 month term & 25% deposit.
Total repayments (260) = **\$33,950.31**

Gain peace of mind with
Mechanical Breakdown
Insurance. **Ask us how.**

Top features

- » 4WD/4x4
- » Bullbar
- » Flat Deck
- » Running Boards
- » Tow Bar

Body Style	Reg No.
4 door, Ute	HMZ229
Odometer	Ext Colour
227,971 km	Grey
Engine	History
3200 cc, In-Line	NZ New, 6 owners
Fuel Type	Seats
Diesel	5 seats
Transmission	CO2 Emissions
Manual, 4WD	-
Wheels	Energy Economy
-	-
VIN	
MNAUMEF50EW275231	
Interior	
-	
Safety	
-	

Stock ID: 35494

* Pearce Brothers is not a lender nor a financial adviser. Any amounts displayed should not be seen as an offer of finance or taken as financial advice. The interest rate, fees and loan term used in this calculation may not actually represent those available from lenders. Actual interest rates, fees and loan terms will vary per lender and are typically based on an assessment of your credit risk and responsible lending criteria. Any repayment amounts displayed are indicative only and have been calculated using several other indicative inputs. The interest rate used in this calculation is an arbitrary 14.95%, however exact interest rates vary per lender. The term of the loan used in this calculation is 60 month. Exact terms available vary per lender although options typically include 6, 12, 18, 24, 36, 48 and 60 months. This calculation also includes two typical mandatory fees charged by lenders. These are an account admin fee of \$1.80 per month (other payment frequencies may be available) and a one-off establishment fee of \$625.00. Typically, this fee can be paid upfront or, as in this calculation, be capitalised over the contract term, ie. included in the loan amount. These fees can vary per lender and other non-mandatory fees and charges may also apply. The total amount of repayments has been calculated by multiplying 260 weekly repayments (based on a 60 month term) by the weekly repayment amount of \$106.56 which equals \$33,950.31. This calculator does not consider any of your own personal circumstances and we strongly suggest you seek budgeting advice prior to committing to any loan contract. Responsible lending criteria and lender terms and conditions will likely apply to any finalised loan contract. Proof of security and/or vehicle insurance may also be required before proceeding.

Generated 05 May 2025 16:32