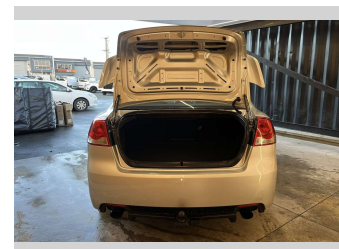
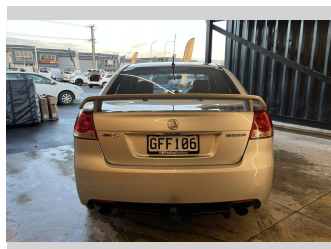
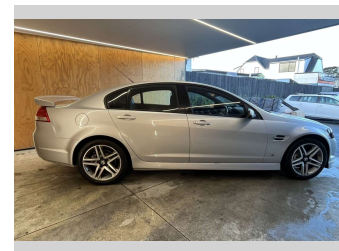
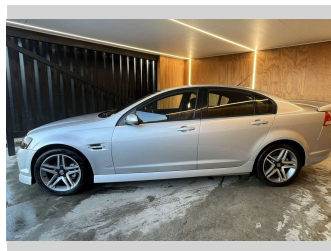
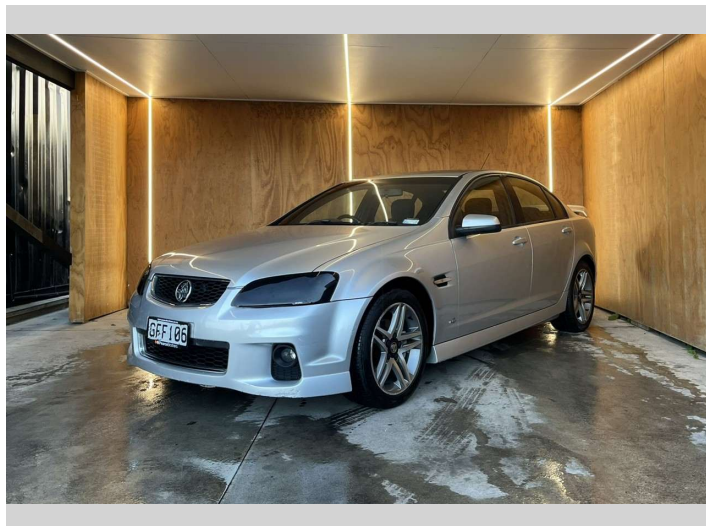


2012 Holden Commodore VE SV6, NZ NEW, SERIES II



Purchase Price **\$7,990**
Includes GST, Registration & Licensing

Finance may be available on this vehicle. Ask one of our friendly staff for more information.



Gain peace of mind with Mechanical Breakdown Insurance. **Ask us how.**



Top features

- » Air Bag(s)
- » Air Conditioning
- » Alloys
- » Alloys
- » Bluetooth
- » Car Stereo
- » Central Locking
- » Central Locking
- » Climate Control
- » Cruise Control
- » Cruise Control
- » Digital Display
- » Electric Mirrors
- » Electric Mirrors
- » Electric Windows
- » Fog Lights
- » NZ NEW
- » Power Steering

Body Style
Sedan

Odometer
249,634 km

Engine
3564 cc


Fuel Type
Petrol

Transmission
Automatic

Wheels
-

VIN
6G1EK5E37CL61XXXX

Interior
-

Safety

Based on 2025 UCSR rating for 06-13 models

Reg No.
GFF106

Ext Colour
Silver

History
NZ New

Seats
5 seats

CO2 Emissions
★ ★ ☆ ☆ ☆ ☆
254 grams/km

Energy Economy
★ ☆ ☆ ☆ ☆ ☆
Annual fuel cost of \$4,160
10.6L per 100km

Cost per year is an estimate based on petrol price of \$2.80 per litre and an average distance of 14000 km. Emissions and Energy Economy figures standardised to 3P WLTP.

Stock ID: 32983