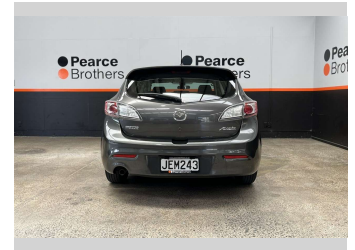
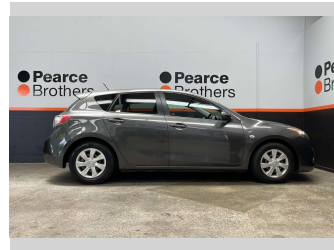
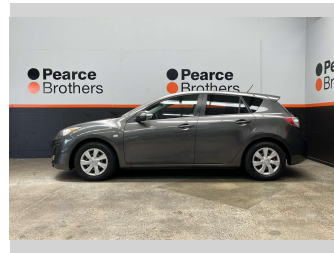
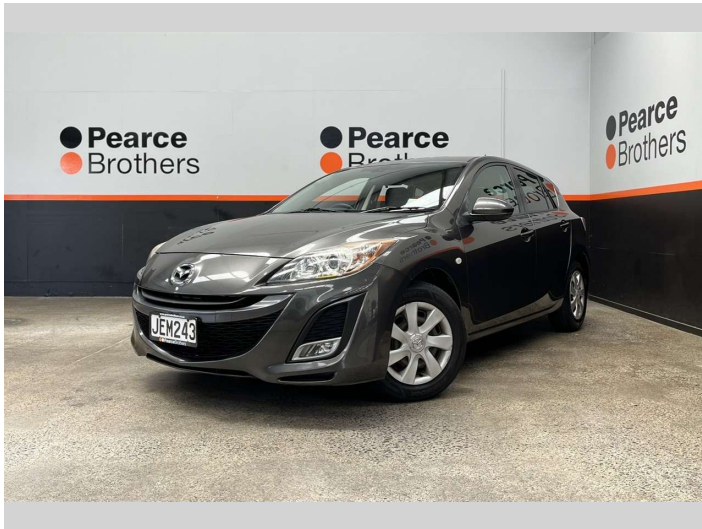


2010 Mazda Axela 1.5L PETROL, FUEL SAVER,



Purchase Price

Includes GST, Registration & Licensing

\$10,990

Finance may be available on this vehicle. Ask one of our friendly staff for more information.



Gain peace of mind with Mechanical Breakdown Insurance. **Ask us how.**



Top features

- » Air Bag(s)
- » Air Conditioning
- » Bluetooth
- » Car Stereo
- » Central Locking
- » Central Locking
- » Climate Control
- » Digital Display
- » Electric Mirrors
- » Electric Mirrors
- » Electric Windows
- » Fog Lights
- » LOW KMS
- » Power Steering
- » Tinted Windows

Body Style

Hatchback

Odometer

73,855 km

Engine

1490 cc

Fuel Type

Petrol

Transmission

CVT

Wheels

-

VIN

7AT0C13JX15110957

Interior

-

Safety



Based on 2025 UCSR rating for 09-13 models

Reg No.

JEM243

Ext Colour

Grey

History

Ex-Overseas

Seats

5 seats

CO2 Emissions

★★★★★☆☆

174 grams/km

Energy Economy

★★★☆☆☆☆

**Annual fuel cost of \$2,820
7.2L per 100km**

Cost per year is an estimate based on petrol price of \$2.80 per litre and an average distance of 14000 km. Emissions and Energy Economy figures standardised to 3P WLTP.

Stock ID: 31842



Pearce Brothers | Phone 09 250 1987 | Email ethan@pearcebrothers.co.nz
155 Cavendish Drive, Manukau, Auckland 2104, New Zealand
www.pearcebrothers.co.nz