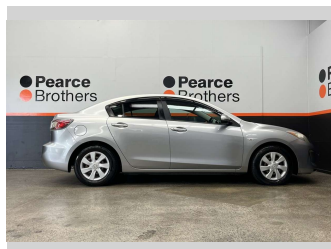


# 2012 Mazda Axela 1.5P, SEDAN, LOW KMS, FUEL



## Purchase Price

**\$8,990**

Includes GST, Registration & Licensing

Finance may be available on this vehicle. Ask one of our friendly staff for more information.



Gain peace of mind with Mechanical Breakdown Insurance. **Ask us how.**



## Top features

- » Air Bag(s)
- » Air Conditioning
- » Alloys
- » Car Stereo
- » Central Locking
- » Central Locking
- » Climate Control
- » Electric Mirrors
- » Electric Mirrors
- » Electric Windows
- » LOW KMS
- » Monsoon Guard
- » Power Steering
- » Tinted Windows

Body Style

**Sedan**

Odometer

**103,775 km**

Engine

**1490 cc**

Fuel Type

**Petrol**

Transmission

**CVT**

Wheels

-

VIN

**7AT0C13JX18202249**

Interior

-

Safety



Based on 2013 UCSR rating for 09-13 models

Reg No.

**LFH159**

Ext Colour

**Grey**

History

**Ex-Overseas**

Seats

**5 seats**

CO2 Emissions

★★★★★☆☆

**174 grams/km**

Energy Economy

★★★☆☆☆☆

**Annual fuel cost of \$2,820**  
**7.2L per 100km**

Cost per year is an estimate based on petrol price of \$2.80 per litre and an average distance of 14000 km. Emissions and Energy Economy figures standardised to 3P WLTP.

**Stock ID: 32103**



Pearce Brothers | Phone 09 250 1987 | Email [ethan@pearcebrothers.co.nz](mailto:ethan@pearcebrothers.co.nz)  
155 Cavendish Drive, Manukau, Auckland 2104, New Zealand  
[www.pearcebrothers.co.nz](http://www.pearcebrothers.co.nz)