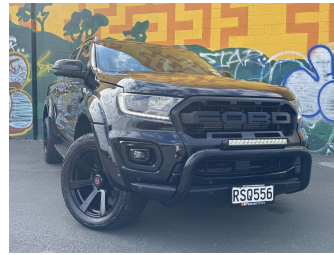


# 2022 Ford Ranger WILDTRAK X, 4X4 BI-TURBO



Purchase Price **\$38,995**  
Includes GST, Registration & Licensing

Finance may be available on this vehicle. Ask one of our friendly staff for more information.



Gain peace of mind with Mechanical Breakdown Insurance. **Ask us how.**



**Top features**

None Listed

Body Style  
**4 door, Ute**

Odometer  
**122,552 km**

Engine  
**1996 cc, In-Line**

Fuel Type  
**Diesel**


Transmission  
**Automatic, 4WD**

Wheels  
-

VIN  
**MPBUMFF60MX37838T**

Interior  
**Black**

Safety



Based on 2025 VSRR rating

Reg No.  
-

Ext Colour  
**Black**

History  
**NZ New**

Seats  
**5 seats, Leather**

CO2 Emissions  
**★ ★ ☆ ☆ ☆ ☆**  
**242 grams/km**

Energy Economy  
**★ ★ ☆ ☆ ☆ ☆**  
**Annual fuel cost of \$3,640**  
**9.2L per 100km**

Cost per year is an estimate based on diesel price of \$2.00 per litre and an average distance of 14000 km. Includes Road User Charges (RUC). Emissions and Energy Economy figures standardised to 3P WLTP.

**Stock ID: 40394**