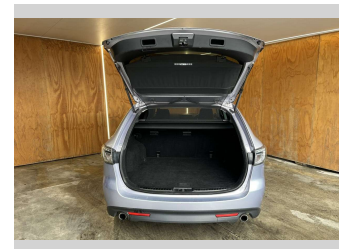
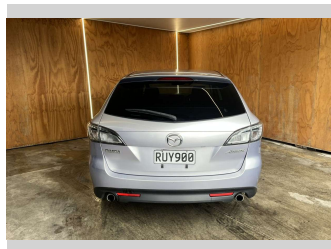
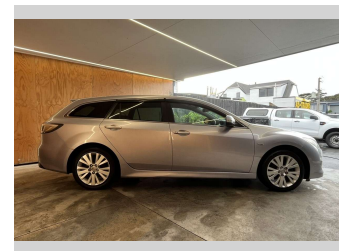
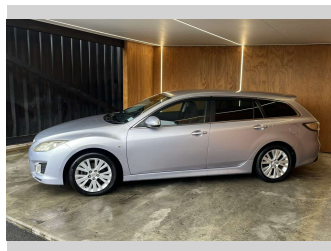
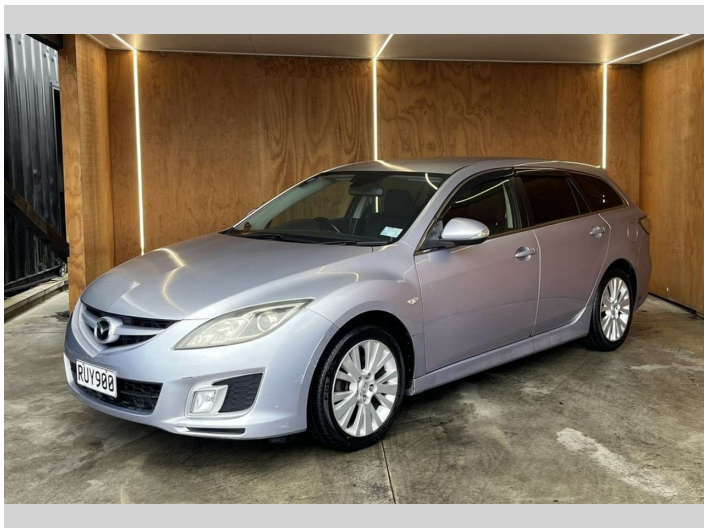



2008 Mazda Atenza 2.5L PETROL, KEYLESS ENTRY,



Purchase Price **\$5,990**
Includes GST, Registration & Licensing

Finance may be available on this vehicle. Ask one of our friendly staff for more information.



Gain peace of mind with Mechanical Breakdown Insurance. **Ask us how.**



Top features

- » Air Bag(s)
- » Air Conditioning
- » Alloys
- » Alloys
- » Car Stereo
- » Central Locking
- » Central Locking
- » Climate Control
- » Driving Lights
- » Electric Mirrors
- » Electric Mirrors
- » Electric Windows
- » Fog Lights
- » Power Steering
- » Push Button Start
- » Rear Wiper
- » Remote Locking
- » Tinted Windows

Body Style
Station Wagon

Odometer
201,138 km

Engine
2480 cc


Fuel Type
Petrol

Transmission
Automatic

Wheels
-

VIN
7AT0C139X17100712

Interior
-

Safety

Based on 2025 UCSR rating for 08-11 models

Reg No.
RUY900

Ext Colour
Silver

History
Ex-Overseas

Seats
5 seats

CO2 Emissions
★ ★ ★ ☆ ☆ ☆
215 grams/km

Energy Economy
★ ☆ ☆ ☆ ☆ ☆
Annual fuel cost of \$3,760
9.6L per 100km

Cost per year is an estimate based on petrol price of \$2.80 per litre and an average distance of 14000 km. Emissions and Energy Economy figures standardised to 3P WLTP.

Stock ID: 33552