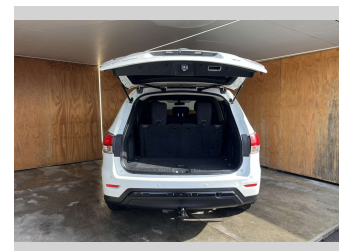
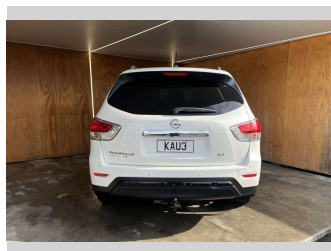
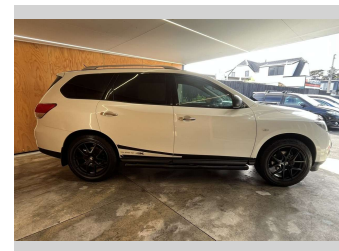
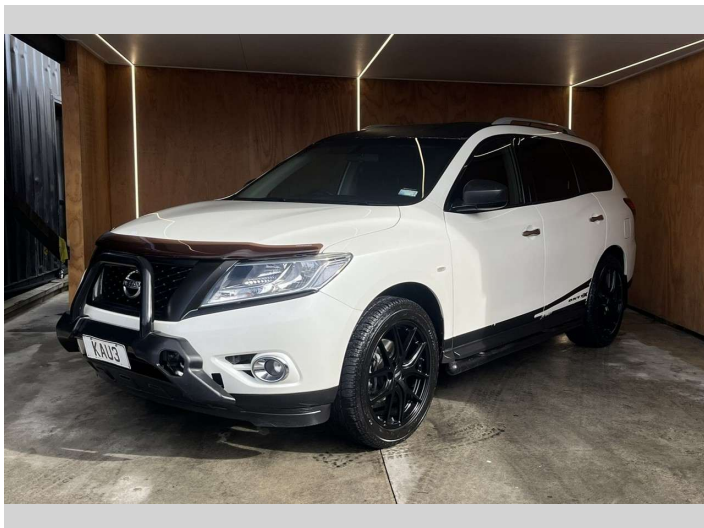



# 2016 Nissan Pathfinder ST, 3.5L PETROL, 7 SEATER,



**Purchase Price** **\$10,990**  
Includes GST, Registration & Licensing

Finance may be available on this vehicle. Ask one of our friendly staff for more information.



Gain peace of mind with Mechanical Breakdown Insurance. **Ask us how.**



**Top features**

- » Air Bag(s)
- » Air Conditioning
- » Bluetooth
- » Car Alarm
- » Car Stereo
- » Central Locking
- » Central Locking
- » Climate Control
- » Cruise Control
- » Cruise Control
- » Driving Lights
- » Electric Mirrors
- » Electric Mirrors
- » Electric Windows
- » Fog Lights
- » Power Steering
- » Rear Wiper
- » Remote Locking

Body Style  
**5 door, RV/SUV**

Odometer  
**199,750 km**

Engine  
**3498 cc**

Fuel Type  
**Petrol**

Transmission  
**Automatic**

Wheels  
-

VIN  
**5N1AR2MN9GC664202**

Interior  
-

Safety



Based on 2025 UCSR rating for 13-20 models

Reg No.  
**KAU3**

Ext Colour  
**White**

History  
**NZ New**

Seats  
**7 seats**

CO2 Emissions  
★ ★ ☆ ☆ ☆ ☆  
**260 grams/km**

Energy Economy  
★ ☆ ☆ ☆ ☆ ☆

**Annual fuel cost of \$4,310**  
**11L per 100km**

Cost per year is an estimate based on petrol price of \$2.80 per litre and an average distance of 14000 km. Emissions and Energy Economy figures standardised to 3P WLTP.

**Stock ID: 33527**