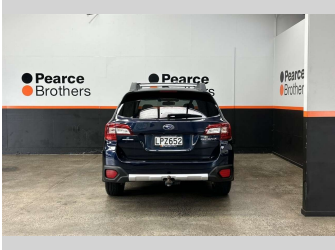
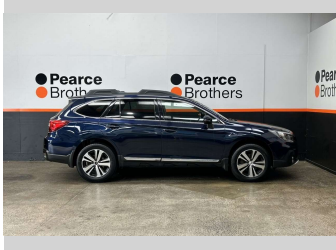
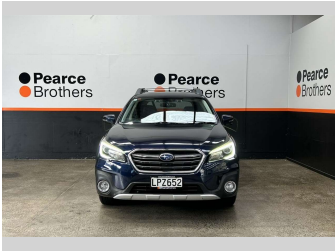
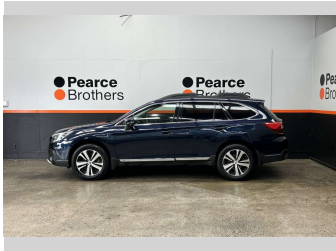
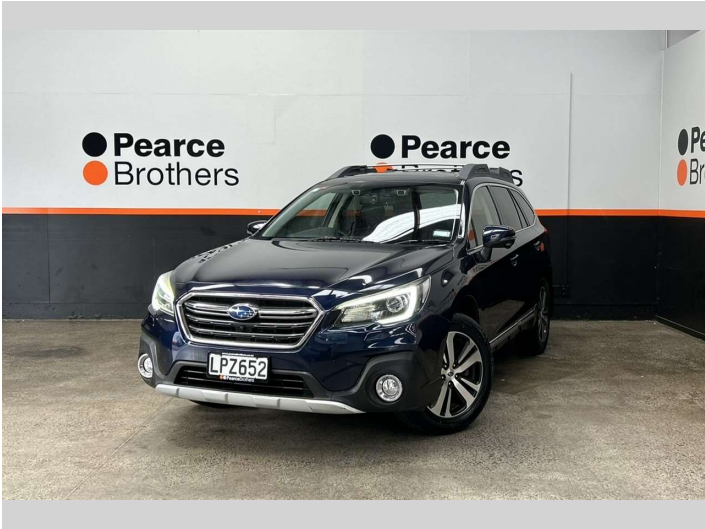


2018 Subaru OUTBACK PREMIUM, 4X4, 3.6L, NZ




Purchase Price

\$17,990

Includes GST, Registration & Licensing

Finance may be available on this vehicle. Ask one of our friendly staff for more information.



Gain peace of mind with Mechanical Breakdown Insurance. **Ask us how.**



Top features

» 4WD

» 4WD/4x4

» Adaptive Cruise Contro...

» Air Bag(s)

» Air Conditioning

» Alloys

» Alloys

» Bluetooth

» Car Stereo

» Central Locking

» Central Locking

» Climate Control

» Cruise Control

» Cruise Control

» Digital Display

» Electric Mirrors

» Electric Mirrors

» Electric Windows

Body Style

5 door, Station Wagon

Odometer

168,540 km

Engine

3630 cc, Internal Combustion

Fuel Type

Petrol

Transmission

CVT

Wheels

-


VIN

JF2BSFKC2JG10XXXX

Interior

-

Safety



Based on 2024 UCSR rating for 14-20 models

Reg No.

LPZ652

Ext Colour

Blue

History

NZ New

Seats

5 seats

CO2 Emissions

★ ★ ☆ ☆ ☆ ☆

256 grams/km

Energy Economy

★ ☆ ☆ ☆ ☆ ☆

Annual fuel cost of \$4,310

11L per 100km

Cost per year is an estimate based on petrol price of \$2.80 per litre and an average distance of 14000 km. Emissions and Energy Economy figures standardised to 3P WLTP.

Stock ID: 30203



Pearce Brothers | Phone 09 250 1987 | Email ethan@pearcebrothers.co.nz
155 Cavendish Drive, Manukau, Auckland 2104, New Zealand
www.pearcebrothers.co.nz