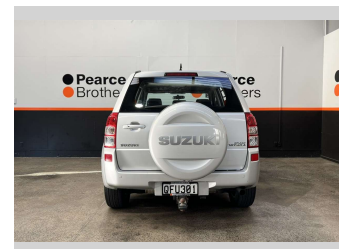
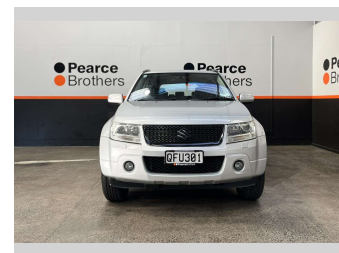
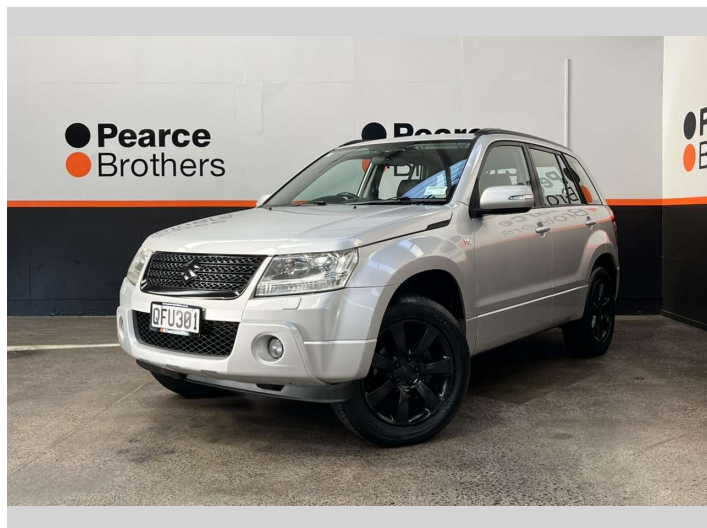



# 2010 Suzuki Grand Vitara WJLXA, 4X4, NZ NEW,




**Purchase Price** **\$9,990**  
Includes GST, Registration & Licensing

Finance may be available on this vehicle. Ask one of our friendly staff for more information.



Gain peace of mind with Mechanical Breakdown Insurance. **Ask us how.**



**Top features**

- » 4WD
- » 4WD/4x4
- » Air Bag(s)
- » Air Conditioning
- » Alloys
- » Alloys
- » Bluetooth
- » Car Stereo
- » Central Locking
- » Central Locking
- » Climate Control
- » Cruise Control
- » Electric Mirrors
- » Electric Mirrors
- » Electric Windows
- » Fog Lights
- » Leather Seats
- » NZ NEW

**Body Style**  
5 door, RV/SUV

**Odometer**  
142,314 km

**Engine**  
3195 cc, Petrol

**Fuel Type**  
Petrol


**Transmission**  
Automatic

**Wheels**  
-

**VIN**  
JSAJTDB4V00202148

**Interior**  
-

**Safety**



Based on 2025 UCSR rating for 08-18 models

**Reg No.**  
QFU301

**Ext Colour**  
Silver

**History**  
NZ New

**Seats**  
5 seats

**CO2 Emissions**  
★☆☆☆☆  
281 grams/km

**Energy Economy**  
★☆☆☆☆  
Annual fuel cost of \$4,590  
11.7L per 100km

Cost per year is an estimate based on petrol price of \$2.80 per litre and an average distance of 14000 km. Emissions and Energy Economy figures standardised to 3P WLTP.

**Stock ID: 33247**



Pearce Brothers | Phone 09 250 1987 | Email ethan@pearcebrothers.co.nz  
155 Cavendish Drive, Manukau, Auckland 2104, New Zealand  
www.pearcebrothers.co.nz