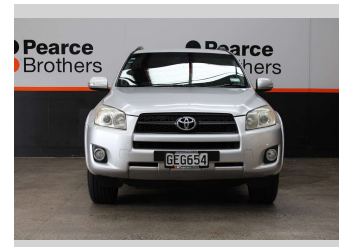
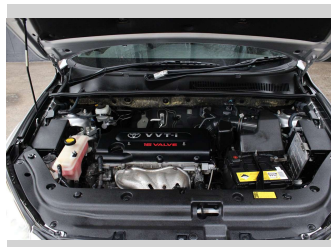
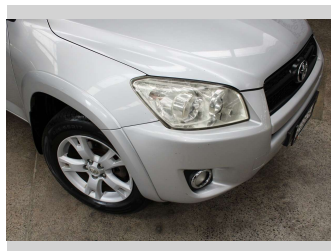


2012 Toyota RAV4 LTD 2.4P 4WD NZ NEW



Purchase Price **\$8,990**
Includes GST, Registration & Licensing

Finance may be available on this vehicle. Ask one of our friendly staff for more information.



Gain peace of mind with Mechanical Breakdown Insurance. **Ask us how.**



Top features

- » 4WD/4x4
- » Air Bag(s)
- » Air Conditioning
- » Alloys
- » Bluetooth
- » Car Stereo
- » Central Locking
- » Central Locking
- » Cruise Control
- » Electric Mirrors
- » Electric Mirrors
- » Electric Windows
- » Power Steering
- » Remote Locking
- » Tinted Windows

Body Style
Wagon

Odometer
224,569 km

Engine
2362 cc, Diesel


Fuel Type
Petrol

Transmission
Automatic

Wheels
-

VIN
JTMBD31V30529XXXX

Interior
-

Safety

Based on 2025 UCSR rating for 06-12 models

Reg No.
GEG654

Ext Colour
Silver

History
NZ New

Seats
5 seats

CO2 Emissions
★ ★ ☆ ☆ ☆ ☆
256 grams/km

Energy Economy
★ ☆ ☆ ☆ ☆ ☆
Annual fuel cost of \$4,190
10.7L per 100km

Cost per year is an estimate based on petrol price of \$2.80 per litre and an average distance of 14000 km. Emissions and Energy Economy figures standardised to 3P WLTP.

Stock ID: 33095