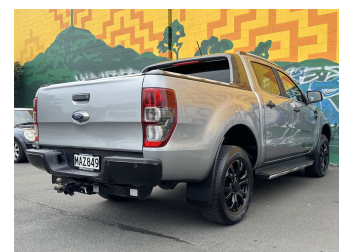


# 2019 Ford Ranger WILDTRAK 2.0D/4WD BI TURBO



**Purchase Price** **\$27,995**  
Includes GST, Registration & Licensing

Finance may be available on this vehicle. Ask one of our friendly staff for more information.



Gain peace of mind with Mechanical Breakdown Insurance. **Ask us how.**



**Top features**

None Listed

**Body Style**  
4 door, Ute

**Odometer**  
212,539 km

**Engine**  
1996 cc, In-Line

**Fuel Type**  
Diesel


**Transmission**  
Automatic, 4WD

**Wheels**  
-

**VIN**  
MPBUMFF60JX20335E

**Interior**  
Black

**Safety**



Based on 2025 VSRR rating

**Reg No.**  
-

**Ext Colour**  
Silver

**History**  
NZ New

**Seats**  
5 seats, Leather

**CO2 Emissions**  
★★★★☆☆  
225 grams/km

**Energy Economy**  
★★★★☆☆  
**Annual fuel cost of \$3,440**  
**8.5L per 100km**

Cost per year is an estimate based on diesel price of \$2.00 per litre and an average distance of 14000 km. Includes Road User Charges (RUC). Emissions and Energy Economy figures standardised to 3P WLTP.

**Stock ID: 40303**