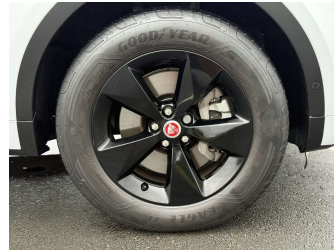



2021 Jaguar E-Pace R-DYNAMIC P250 NZ NEW



Purchase Price **\$42,975**
Includes GST, Registration & Licensing

Finance may be available on this vehicle. Ask one of our friendly staff for more information.



Gain peace of mind with Mechanical Breakdown Insurance. **Ask us how.**



Top features

None Listed

Body Style
5 door, SUV

Odometer
6,184 km

Engine
2000 cc, In-Line

Fuel Type
Petrol

Transmission
Automatic, 4WD

Wheels
-

VIN
SADFA2AX8J1Z002CC

Interior
Black

Safety



Based on 2025 VSRR rating

Reg No.
RQM76

Ext Colour
white

History
NZ New

Seats
5 seats, Leather

CO2 Emissions
★★★★☆
194 grams/km

Energy Economy
★★★★☆


Annual fuel cost of \$3,370
8.6L per 100km

Cost per year is an estimate based on petrol price of \$2.80 per litre and an average distance of 14000 km. Emissions and Energy Economy figures standardised to 3P WLTP.

Stock ID: 40523



Pearce Brothers | Phone 0800 080 061 | Email adam@pearcebrothers.co.nz
103 Great South Road, Papatoetoe, Auckland 2113, New Zealand
www.pearcebrothers.co.nz



4.70 | 689 reviews