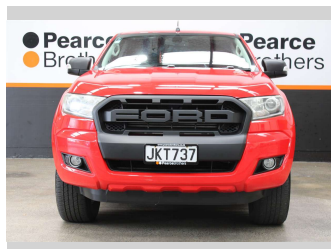
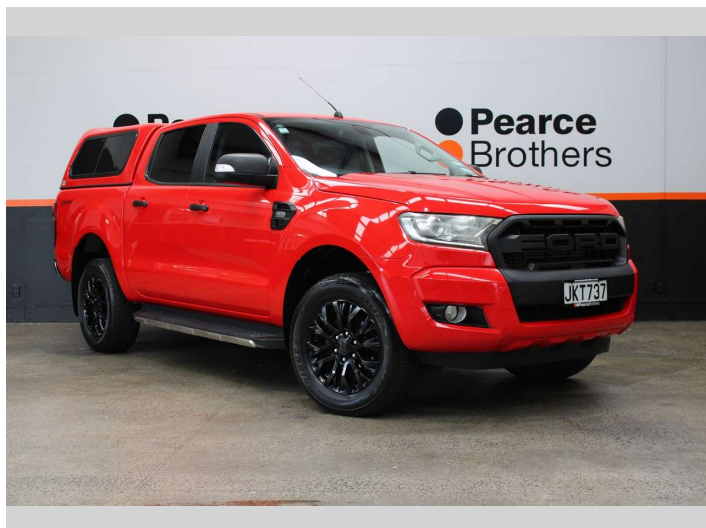


2015 Ford Ranger XLT PX2 CANOPY, 20" MAGS



Purchase Price **\$21,990**
Includes GST, Registration & Licensing

Finance may be available on this vehicle. Ask one of our friendly staff for more information.



Gain peace of mind with Mechanical Breakdown Insurance. **Ask us how.**



- Top features**
- » Air Bag(s)
 - » Air Conditioning
 - » Alloys
 - » Bluetooth
 - » Car Stereo
 - » Central Locking
 - » Central Locking
 - » Cruise Control
 - » Cruise Control
 - » Electric Mirrors
 - » Electric Windows
 - » Fog Lights
 - » Parking Sensors
 - » Power Steering
 - » Remote Locking
 - » Reverse Camera
 - » Reverse Camera
 - » Running Boards

Body Style
4 door, Ute

Odometer
135,093 km

Engine
3198 cc, Diesel


Fuel Type
Diesel

Transmission
Automatic

Wheels
-

VIN
MNAUMFF50FW496969

Interior
-

Safety

Based on 2025 VSRR rating

Reg No.
JKT737

Ext Colour
Red

History
NZ New

Seats
5 seats

CO2 Emissions
★ ★ ☆ ☆ ☆ ☆
257 grams/km

Energy Economy
★ ★ ☆ ☆ ☆ ☆
Annual fuel cost of \$3,780
9.7L per 100km

Cost per year is an estimate based on diesel price of \$2.00 per litre and an average distance of 14000 km. Includes Road User Charges (RUC). Emissions and Energy Economy figures standardised to 3P WLTP.

Stock ID: 33549