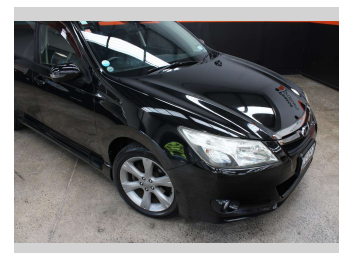
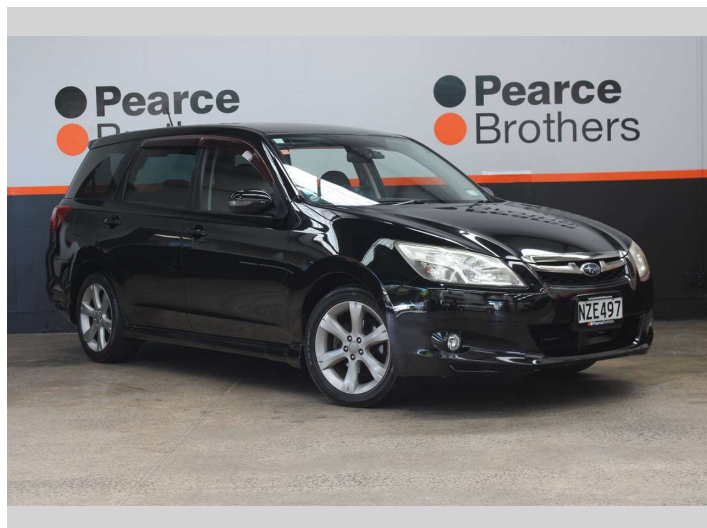



2012 Subaru Exiga 2.0 PETROL, 7 SEATER




Purchase Price **\$6,990**
Includes GST, Registration & Licensing

Finance may be available on this vehicle. Ask one of our friendly staff for more information.



UDC
New Zealand's Finance Company
MARAC
MEANS FINANCE

Gain peace of mind with Mechanical Breakdown Insurance. **Ask us how.**



autosure
INSURANCE

Top features

- » Air Bag(s)
- » Air Conditioning
- » Alloys
- » Car Stereo
- » Central Locking
- » Central Locking
- » Cruise Control
- » Electric Mirrors
- » Electric Windows
- » Fog Lights
- » Keyless Entry
- » Power Steering
- » Push Button Start
- » Remote Locking
- » Tinted Windows

Body Style
Wagon

Odometer
103,492 km

Engine
1990 cc, Diesel


Fuel Type
Petrol

Transmission
CVT

Wheels
-

VIN
7AT0GF1RX2102XXXX

Interior
-

Safety

Based on 2025 UCSR rating for 09-14 models

Reg No.
NZE497

Ext Colour
Black

History
Ex-Overseas

Seats
7 seats

CO2 Emissions
★ ★ ★ ★ ☆ ☆ ☆
199 grams/km

Energy Economy
★ ★ ☆ ☆ ☆ ☆ ☆
Annual fuel cost of \$3,250
8.3L per 100km

Cost per year is an estimate based on petrol price of \$2.80 per litre and an average distance of 14000 km. Emissions and Energy Economy figures standardised to 3P WLTP.

Stock ID: 33094



Pearce Brothers | Phone 09 279 2479 | Email daniel@pearcebrothers.co.nz
579 Great South Road, Manukau, Auckland 2025, New Zealand
www.pearcebrothers.co.nz