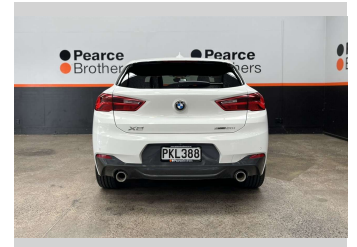
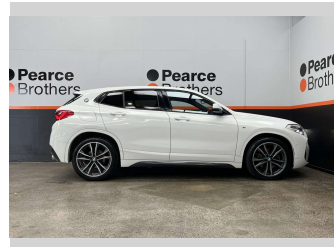
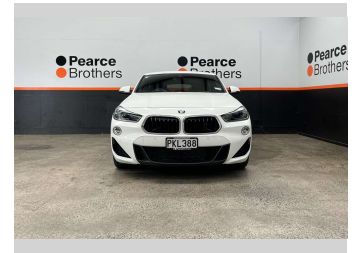


2018 BMW X2 S20i, NZ NEW, HEATED LEATHER



Purchase Price

Includes GST, Registration & Licensing

\$19,990

Finance may be available on this vehicle. Ask one of our friendly staff for more information.



Gain peace of mind with Mechanical Breakdown Insurance. **Ask us how.**



Top features

- » Adaptive Cruise Control
- » Air Bag(s)
- » Air Conditioning
- » Alloys
- » Alloys
- » Bluetooth
- » Car Stereo
- » Central Locking
- » Central Locking
- » Climate Control
- » Cruise Control
- » Cruise Control
- » Digital Display
- » Electric Mirrors
- » Electric Mirrors
- » Electric Windows
- » Fog Lights
- » Heated Seats

Body Style

5 door, RV/SUV

Odometer

107,201 km

Engine

1998 cc

Fuel Type

Petrol

Transmission

Automatic

Wheels

-

VIN

WBAYH32080EG28949

Interior

-

Safety



Based on 2025 VSRR rating

Reg No.

PKL388

Ext Colour

White

History

NZ New

Seats

5 seats

CO2 Emissions

★★★★★☆☆

153 grams/km

Energy Economy

★★★★☆☆☆☆

**Annual fuel cost of \$2,630
6.7L per 100km**

Cost per year is an estimate based on petrol price of \$2.80 per litre and an average distance of 14000 km. Emissions and Energy Economy figures standardised to 3P WLTP.

Stock ID: 32244



Pearce Brothers | Phone 09 250 1987 | Email ethan@pearcebrothers.co.nz
155 Cavendish Drive, Manukau, Auckland 2104, New Zealand
www.pearcebrothers.co.nz