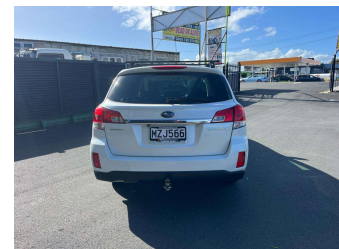
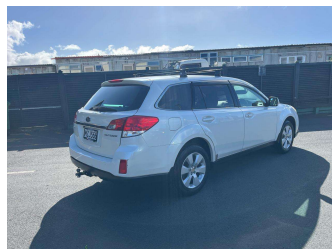


2010 Subaru OUTBACK 2.5 4X4 LEATHER




Purchase Price **\$9,990**
Includes GST, Registration & Licensing

Finance may be available on this vehicle. Ask one of our friendly staff for more information.



Gain peace of mind with Mechanical Breakdown Insurance. **Ask us how.**



Top features
None Listed

Body Style
Station Wagon

Odometer
115,885 km

Engine
2450 cc, Internal Combustion


Fuel Type
Petrol

Transmission
Automatic

Wheels
-

VIN
7AT0GF16X20023502

Interior
-

Safety

Based on 2025 UCSR rating for 09-14 models

Reg No.
MZJ566

Ext Colour
White

History
Ex-Overseas

Seats
5 seats

CO2 Emissions
★ ★ ★ ☆ ☆ ☆
213 grams/km

Energy Economy
★ ☆ ☆ ☆ ☆ ☆
Annual fuel cost of \$3,490
8.9L per 100km

Cost per year is an estimate based on petrol price of \$2.80 per litre and an average distance of 14000 km. Emissions and Energy Economy figures standardised to 3P WLTP.

Stock ID: 32812



Pearce Brothers | Phone 09 265 0991 | Email Kevin@astraded.nz
327 Great South Road, Manurewa, Auckland 2112, New Zealand