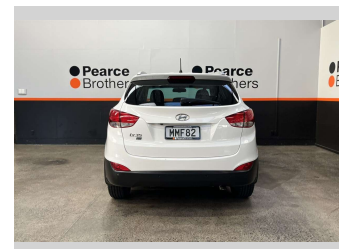
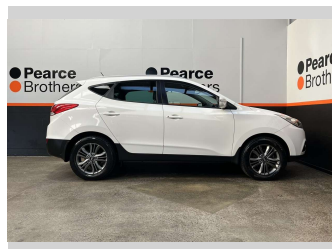
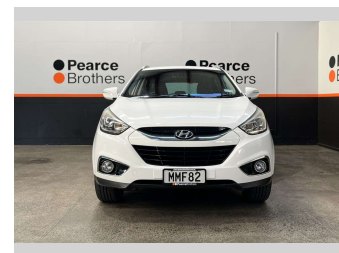
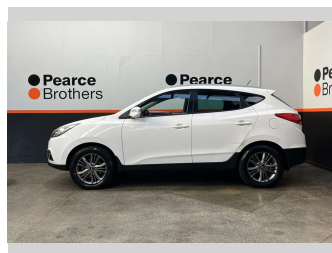
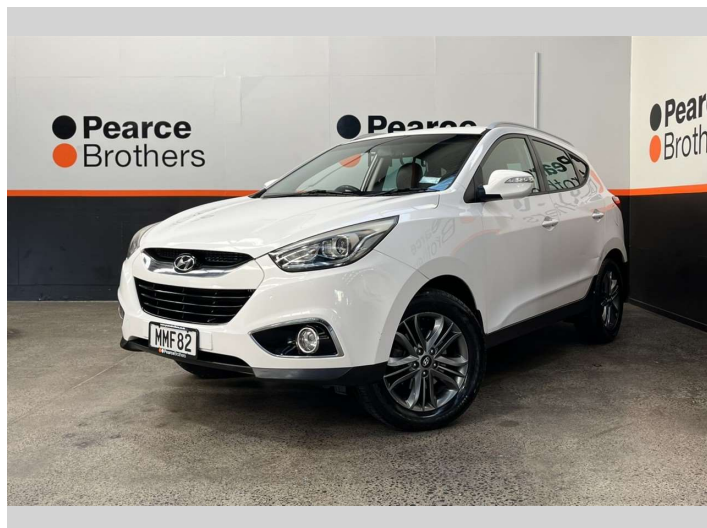



2014 Hyundai iX35 2.0L PETROL, HEATED LEATHER




Purchase Price **\$8,990**
Includes GST, Registration & Licensing

Finance may be available on this vehicle. Ask one of our friendly staff for more information.



UDC
New Zealand's Finance Company
MARAC
MEANS FINANCE

Gain peace of mind with Mechanical Breakdown Insurance. **Ask us how.**



autosure
INSURANCE

Top features

- » Alloys
- » Alloys
- » Auto Headlights
- » AUX
- » Bluetooth
- » Car Stereo
- » CD Player
- » Central Locking
- » Central Locking
- » Climate Control
- » Cruise Control
- » Cruise Control
- » Electric Mirrors
- » Electric Mirrors (Retr...
- » Electric Windows
- » Fog Lights
- » Heated Seats
- » Leather Seats

Body Style
RV/SUV

Odometer
140,018 km

Engine
1999 cc


Fuel Type
Petrol

Transmission
Automatic

Wheels
-

VIN
TMAJU81FMFJ679359

Interior
-

Safety

Based on 2025 UCSR rating for 10-15 models

Reg No.
MMF82

Ext Colour
White

History
Ex-Overseas

Seats
5 seats

CO2 Emissions
★★★★☆☆
223 grams/km

Energy Economy
★★★★☆☆
Annual fuel cost of \$3,680
9.4L per 100km

Cost per year is an estimate based on petrol price of \$2.80 per litre and an average distance of 14000 km. Emissions and Energy Economy figures standardised to 3P WLTP.

Stock ID: 33246



Pearce Brothers | Phone 09 250 1987 | Email ethan@pearcebrothers.co.nz
155 Cavendish Drive, Manukau, Auckland 2104, New Zealand
www.pearcebrothers.co.nz