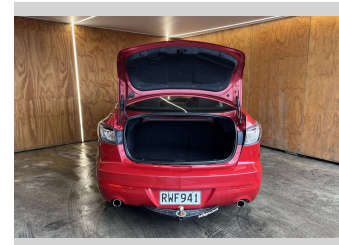
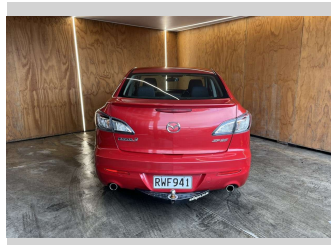
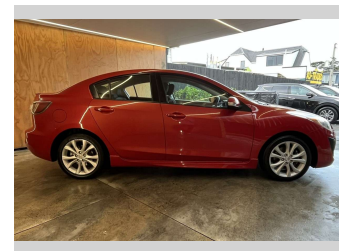
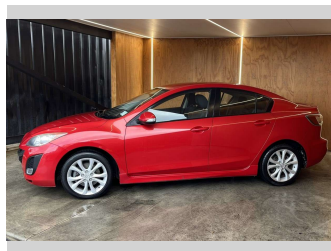
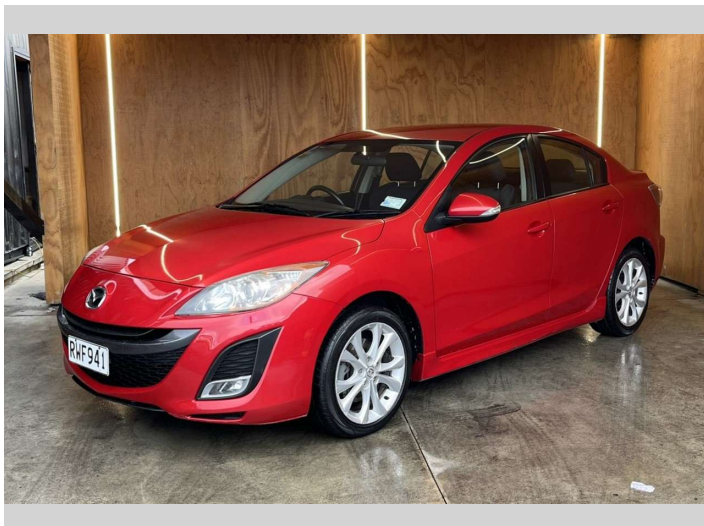



# 2010 Mazda Mazda3 SP25, 2.5L PETROL, NZ NEW,




**Purchase Price** **\$5,990**  
Includes GST, Registration & Licensing

Finance may be available on this vehicle. Ask one of our friendly staff for more information.



Gain peace of mind with Mechanical Breakdown Insurance. **Ask us how.**



**Top features**

- » Air Bag(s)
- » Air Conditioning
- » Alloys
- » Alloys
- » Car Stereo
- » Climate Control
- » Cruise Control
- » Cruise Control
- » Driving Lights
- » Electric Mirrors
- » Electric Mirrors
- » Electric Windows
- » Fog Lights
- » NZ NEW
- » Power Steering
- » Remote Locking
- » Towbar
- » Towbar

Body Style  
**Sedan**

Odometer  
**204,099 km**

Engine  
**2488 cc**


Fuel Type  
**Petrol**

Transmission  
**Automatic**

Wheels  
-

VIN  
**JM0BL10L100145809**

Interior  
-

Safety  
  
Based on 2025 UCSR rating for 09-13 models

Reg No.  
**RWF941**

Ext Colour  
**Red**

History  
**NZ New**

Seats  
**5 seats**

CO2 Emissions  
**★ ★ ★ ☆ ☆ ☆**  
**229 grams/km**

Energy Economy  
**★ ☆ ☆ ☆ ☆ ☆**  
**Annual fuel cost of \$3,760**  
**9.6L per 100km**

Cost per year is an estimate based on petrol price of \$2.80 per litre and an average distance of 14000 km. Emissions and Energy Economy figures standardised to 3P WLTP.

**Stock ID: 33555**