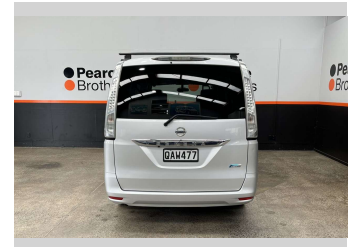
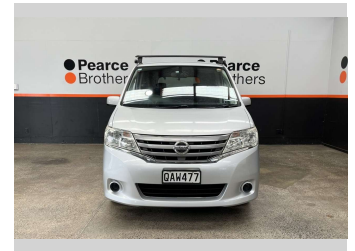
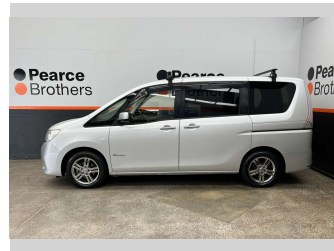


# 2013 Nissan Serena HYBRID, 8 SEATER, FUEL



## Purchase Price

**\$7,990**

Includes GST, Registration & Licensing

Finance may be available on this vehicle. Ask one of our friendly staff for more information.



Gain peace of mind with Mechanical Breakdown Insurance. **Ask us how.**



## Top features

- » 8 Seater
- » Air Bag(s)
- » Air Conditioning
- » Alloys
- » Alloys
- » Car Stereo
- » Central Locking
- » Central Locking
- » Climate Control
- » Cruise Control
- » Cruise Control
- » Digital Display
- » Electric Mirrors
- » Electric Mirrors
- » Electric Windows
- » Hybrid
- » Power Steering
- » Remote Locking

Body Style

**Wagon**

Odometer

**157,877 km**

Engine

**1997 cc, Hybrid**

Fuel Type

**Petrol**

Transmission

**Automatic**

Wheels

-

VIN

**7AT0DH3FX23088652**

Interior

-

Safety



Based on 2025 VSRR rating

Reg No.

**QAW477**

Ext Colour

**Silver**

History

**Ex-Overseas**

Seats

**8 seats**

CO2 Emissions

★★★★☆

**171 grams/km**

Energy Economy

★★☆☆☆☆

**Annual fuel cost of \$2,860**  
**7.3L per 100km**

Cost per year is an estimate based on petrol price of \$2.80 per litre and an average distance of 14000 km. Emissions and Energy Economy figures standardised to 3P WLTP.

**Stock ID: 31985**

**Pearce Brothers**

Pearce Brothers | Phone 09 250 1987 | Email [ethan@pearcebrothers.co.nz](mailto:ethan@pearcebrothers.co.nz)  
155 Cavendish Drive, Manukau, Auckland 2104, New Zealand  
[www.pearcebrothers.co.nz](http://www.pearcebrothers.co.nz)