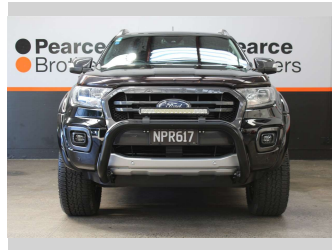
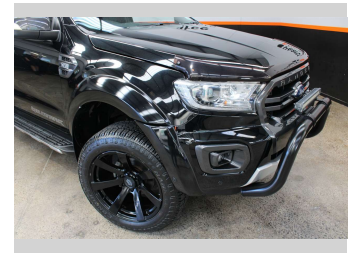


# 2021 Ford Ranger WILDTRAK LIFTED ON 20's



Purchase Price **\$36,990**  
Includes GST, Registration & Licensing

Finance may be available on this vehicle. Ask one of our friendly staff for more information.



Gain peace of mind with Mechanical Breakdown Insurance. **Ask us how.**



**Top features**

- » 4WD/4x4
- » Air Bag(s)
- » Air Conditioning
- » Alloys
- » Bluetooth
- » Car Stereo
- » Central Locking
- » Central Locking
- » Cruise Control
- » Cruise Control
- » Electric Mirrors
- » Electric Mirrors
- » Electric Windows
- » Hard Top
- » Heated Seats
- » Keyless Entry
- » Parking Sensors
- » Power Steering

Body Style  
**4 door, Ute**

Odometer  
**102,633 km**

Engine  
**3198 cc, Diesel**


Fuel Type  
**Diesel**

Transmission  
**Automatic**

Wheels  
-

VIN  
**MPBUMFF50MX338538**

Interior  
-

Safety  
  
Based on 2025 VSRR rating

Reg No.  
**NPR617**

Ext Colour  
**Black**

History  
**NZ New**

Seats  
**5 seats**

CO2 Emissions  
★☆☆☆☆  
**267 grams/km**

Energy Economy  
★☆☆☆☆  
**Annual fuel cost of \$3,920**  
**10.2L per 100km**

Cost per year is an estimate based on diesel price of \$2.00 per litre and an average distance of 14000 km. Includes Road User Charges (RUC). Emissions and Energy Economy figures standardised to 3P WLTP.

**Stock ID: 33533**