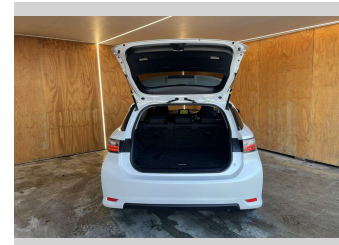
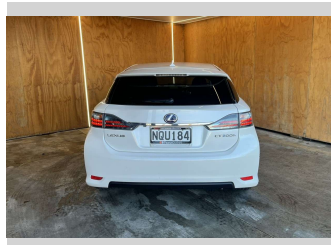
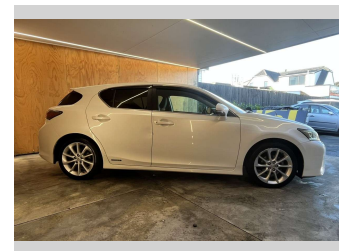
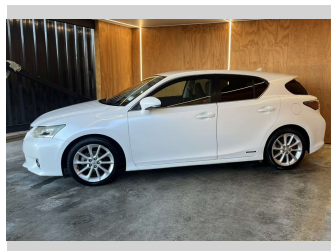
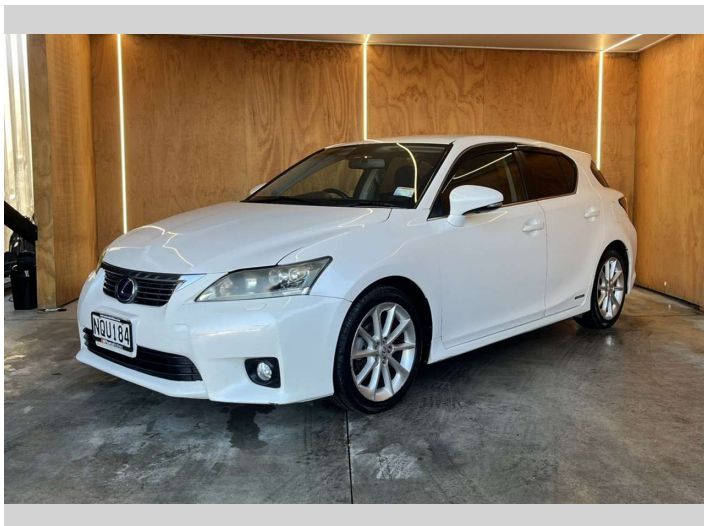



# 2012 Lexus Ct200h HYBRID, HEATED SEATS, TINTS,



**Purchase Price** **\$7,990**  
Includes GST, Registration & Licensing

Finance may be available on this vehicle. Ask one of our friendly staff for more information.



Gain peace of mind with Mechanical Breakdown Insurance. **Ask us how.**



**Top features**

- » Air Bag(s)
- » Air Conditioning
- » Alloys
- » Alloys
- » AUX
- » Bluetooth
- » Car Alarm
- » Car Stereo
- » Central Locking
- » Central Locking
- » Climate Control
- » Cruise Control
- » Cruise Control
- » Driving Lights
- » Electric Mirrors
- » Electric Mirrors
- » Electric Windows
- » Fog Lights

Body Style  
**Hatchback**

Odometer  
**207,576 km**

Engine  
**1790 cc, Hybrid**


Fuel Type  
**Petrol**

Transmission  
**Automatic**

Wheels  
-

VIN  
**7AT0B010X21089759**

Interior  
-

Safety  
  
Based on 2025 VSRR rating

Reg No.  
**NQU184**

Ext Colour  
**White**

History  
**Ex-Overseas**

Seats  
**5 seats**

CO2 Emissions  
**★★★★☆**  
**109 grams/km**

Energy Economy  
**★★★★☆☆**  
**Annual fuel cost of \$1,840**  
**4.7L per 100km**

Cost per year is an estimate based on petrol price of \$2.80 per litre and an average distance of 14000 km. Emissions and Energy Economy figures standardised to 3P WLTP.

**Stock ID: 33472**