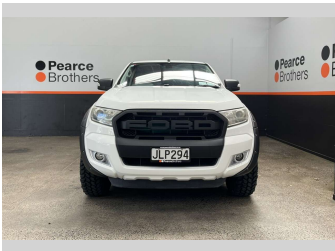
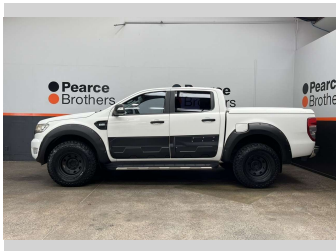
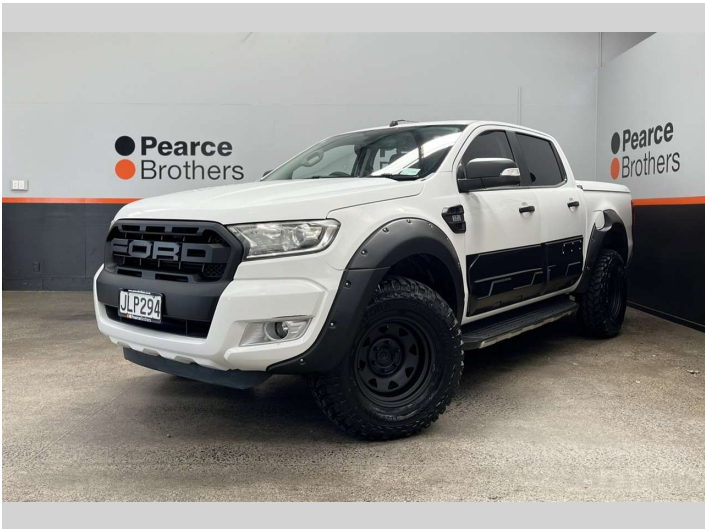


# 2015 Ford Ranger XLT, 3.2D, STEELIES, HARDLID



## Purchase Price

Includes GST, Registration & Licensing

**\$22,990**

Finance may be available on this vehicle. Ask one of our friendly staff for more information.



Gain peace of mind with Mechanical Breakdown Insurance. **Ask us how.**



## Top features

- » Air Bag(s)
- » Air Conditioning
- » Alloys
- » Alloys
- » Bluetooth
- » Car Stereo
- » Central Locking
- » Central Locking
- » Climate Control
- » Cruise Control
- » Cruise Control
- » Digital Display
- » Electric Mirrors
- » Electric Mirrors
- » Electric Windows
- » Fog Lights
- » NZ NEW
- » Parking Sensors

## Body Style

**4 door, Ute**

## Odometer

**224,266 km**

## Engine

**3198 cc, Diesel**

## Fuel Type

**Diesel**

## Transmission

**Automatic**

## Wheels

-

## VIN

**MNAUMFF50FW501573**

## Interior

-

## Safety



Based on 2025 VSRR rating

## Reg No.

**JLP294**

## Ext Colour

**White**

## History

**NZ New**

## Seats

**5 seats**

## CO2 Emissions

★ ★ ☆ ☆ ☆ ☆

**257 grams/km**

## Energy Economy

★ ★ ☆ ☆ ☆ ☆

**Annual fuel cost of \$3,780  
9.7L per 100km**

Cost per year is an estimate based on diesel price of \$2.00 per litre and an average distance of 14000 km. Includes Road User Charges (RUC). Emissions and Energy Economy figures standardised to 3P WLTP.

**Stock ID: 31861**



Pearce Brothers | Phone 09 250 1987 | Email [ethan@pearcebrothers.co.nz](mailto:ethan@pearcebrothers.co.nz)  
155 Cavendish Drive, Manukau, Auckland 2104, New Zealand  
[www.pearcebrothers.co.nz](http://www.pearcebrothers.co.nz)