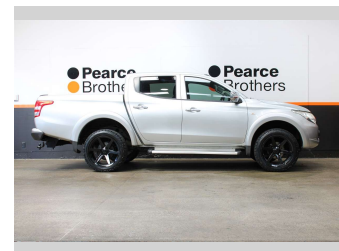
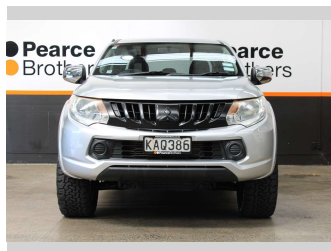


2016 Mitsubishi Triton GLXR BRAND NEW 20" MAGS



Purchase Price

\$20,990

Includes GST, Registration & Licensing

Finance may be available on this vehicle. Ask one of our friendly staff for more information.



Gain peace of mind with Mechanical Breakdown Insurance. **Ask us how.**



Top features

- » ABS Brakes
- » Air Bag(s)
- » Air Conditioning
- » Alloys
- » Alloys
- » Auto Headlights
- » Auto Lights
- » AUX
- » Bluetooth
- » Car Alarm
- » Central Locking
- » Central Locking
- » Child seat anchor poin...
- » Cruise Control
- » Driving Lights
- » Electric Windows
- » Flares
- » ISOFIX

Body Style

4 door, Ute

Odometer

162,123 km

Engine

2442 cc, Diesel

Fuel Type

Diesel

Transmission

MANUAL

Wheels

-

VIN

MMAJJKK10GH025714

Interior

-

Safety



Based on 2025 UCSR rating for 15-23 models

Reg No.

KAQ386

Ext Colour

Silver

History

NZ New

Seats

5 seats

CO2 Emissions

★★★★☆☆

214 grams/km

Energy Economy

★★★★☆☆

Annual fuel cost of \$3,360
8.2L per 100km

Cost per year is an estimate based on diesel price of \$2.00 per litre and an average distance of 14000 km. Includes Road User Charges (RUC). Emissions and Energy Economy figures standardised to 3P WLTP.

Stock ID: 32087



Pearce Brothers | Phone 09 279 2479 | Email daniel@pearcebrothers.co.nz
579 Great South Road, Manukau, Auckland 2025, New Zealand
www.pearcebrothers.co.nz