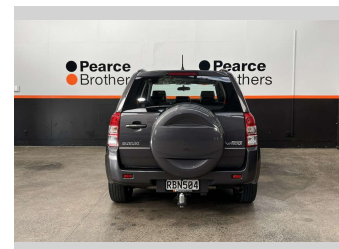
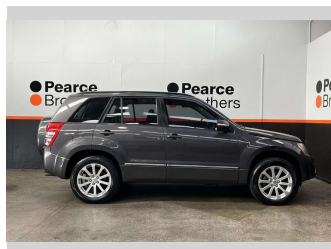
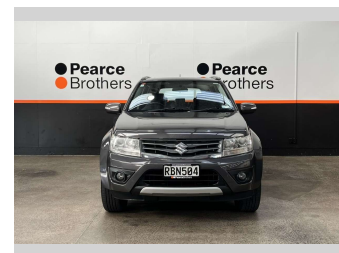
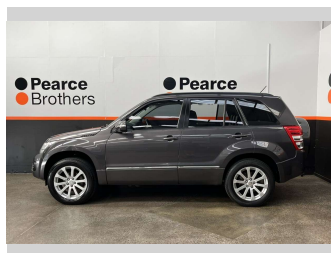
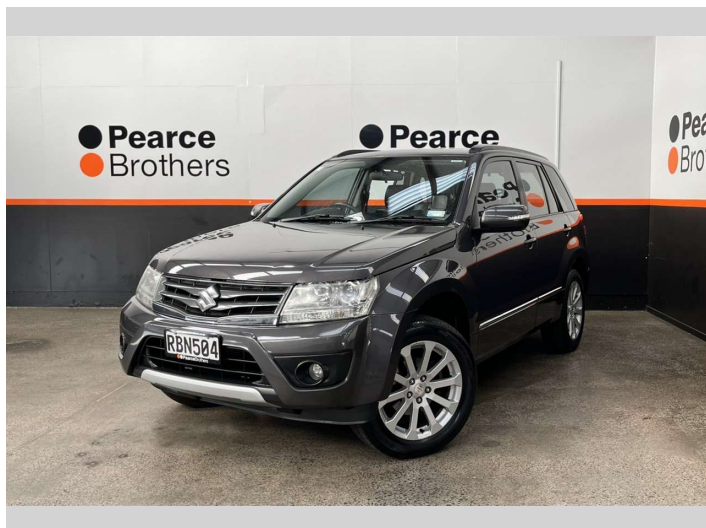


# 2015 Suzuki Grand Vitara WLTDAB, 4X4, LOW KMS,



## Purchase Price

Includes GST, Registration & Licensing

# \$16,990

Finance may be available on this vehicle. Ask one of our friendly staff for more information.



Gain peace of mind with Mechanical Breakdown Insurance. **Ask us how.**



## Top features

- » 4WD
- » 4WD/4x4
- » Air Bag(s)
- » Air Conditioning
- » Alloys
- » Alloys
- » Bluetooth
- » Car Stereo
- » Central Locking
- » Central Locking
- » Climate Control
- » Cruise Control
- » Cruise Control
- » Electric Mirrors
- » Electric Mirrors
- » Electric Windows
- » Fog Lights
- » Leather Seats

## Body Style

**5 door, RV/SUV**

## Odometer

**100,001 km**

## Engine

**2393 cc, Internal Combustion**

## Fuel Type

**Petrol**

## Transmission

**Automatic**

## Wheels

-

## VIN

**JSAJTDA4V0034ZZZZ**

## Interior

-

## Safety



Based on 2015 UCSR rating for 08-18 models

## Reg No.

**RBN504**

## Ext Colour

**Grey**

## History

**NZ New**

## Seats

**5 seats**

## CO2 Emissions

★ ★ ☆ ☆ ☆ ☆

**261 grams/km**

## Energy Economy

★ ☆ ☆ ☆ ☆ ☆

**Annual fuel cost of \$4,310  
11L per 100km**

Cost per year is an estimate based on petrol price of \$2.80 per litre and an average distance of 14000 km. Emissions and Energy Economy figures standardised to 3P WLTP.

**Stock ID: 31753**



Pearce Brothers | Phone 09 250 1987 | Email [ethan@pearcebrothers.co.nz](mailto:ethan@pearcebrothers.co.nz)  
155 Cavendish Drive, Manukau, Auckland 2104, New Zealand  
[www.pearcebrothers.co.nz](http://www.pearcebrothers.co.nz)