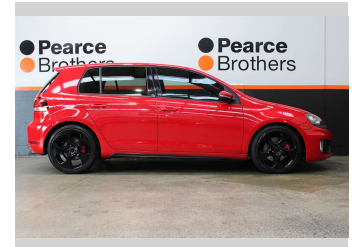
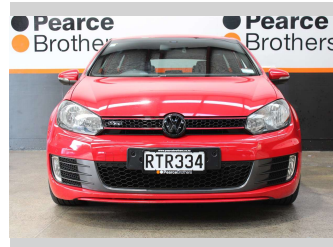



2010 Volkswagen GOLF GTI 155KW NZ NEW




Purchase Price **\$9,990**
Includes GST, Registration & Licensing

Finance may be available on this vehicle. Ask one of our friendly staff for more information.



UDC
New Zealand's Finance Company
MARAC
MEANS FINANCE

Gain peace of mind with Mechanical Breakdown Insurance. **Ask us how.**



autosure
INSURANCE

- Top features**
- » Air Bag(s)
 - » Air Conditioning
 - » Alloys
 - » Bluetooth
 - » Car Stereo
 - » Central Locking
 - » Central Locking
 - » Cruise Control
 - » Cruise Control
 - » Electric Mirrors
 - » Electric Mirrors
 - » Electric Windows
 - » Power Steering
 - » Remote Locking
 - » Reverse Camera
 - » Tinted Windows
 - » Turbo

Body Style
Hatchback

Odometer
152,961 km

Engine
1984 cc, Diesel


Fuel Type
Petrol

Transmission
Automatic

Wheels
-

VIN
WVWZZZ1KZBW067672

Interior
-

Safety

Based on 2025 UCSR rating for 10-13 models

Reg No.
RTR334

Ext Colour
Red

History
NZ New

Seats
5 seats

CO2 Emissions
★ ★ ★ ★ ☆ ☆ ☆
198 grams/km

Energy Economy
★ ★ ☆ ☆ ☆ ☆ ☆
Annual fuel cost of \$3,210
8.2L per 100km

Cost per year is an estimate based on petrol price of \$2.80 per litre and an average distance of 14000 km. Emissions and Energy Economy figures standardised to 3P WLTP.

Stock ID: 33151



Pearce Brothers | Phone 09 279 2479 | Email daniel@pearcebrothers.co.nz
579 Great South Road, Manukau, Auckland 2025, New Zealand
www.pearcebrothers.co.nz