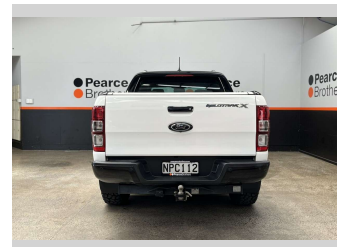
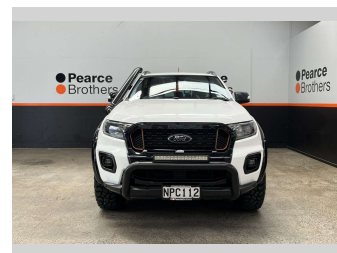
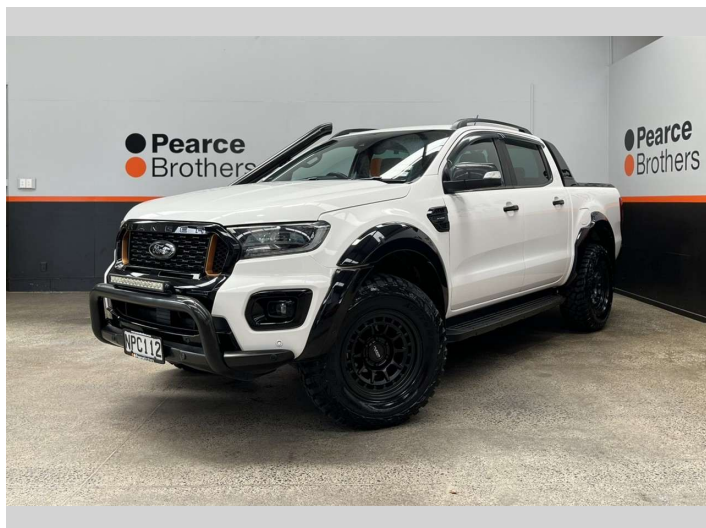


2021 Ford Ranger WILDTRAK X, 2.0D, 4X4, 17" MAGS,



Purchase Price

Includes GST, Registration & Licensing

\$41,990

Finance may be available on this vehicle. Ask one of our friendly staff for more information.



Gain peace of mind with Mechanical Breakdown Insurance. **Ask us how.**



Top features

- » 4WD
- » 4WD/4x4
- » Adaptive Cruise Control...
- » Adjustable 4X4
- » Air Bag(s)
- » Air Conditioning
- » Alloys
- » Alloys
- » Bluetooth
- » Car Stereo
- » Central Locking
- » Central Locking
- » Climate Control
- » Cruise Control
- » Cruise Control
- » Digital Display
- » Electric Mirrors
- » Electric Mirrors

Body Style

4 door, Ute

Odometer

97,400 km

Engine

1996 cc, Diesel

Fuel Type

Diesel

Transmission

Automatic

Wheels

-

VIN

MPBUMFF60MX33XXXX

Interior

-

Safety



Based on 2025 VSRR rating

Reg No.

NPC112

Ext Colour

White

History

NZ New

Seats

5 seats

CO2 Emissions

★★★★☆☆

225 grams/km

Energy Economy

★★★★☆☆

**Annual fuel cost of \$3,440
8.5L per 100km**

Cost per year is an estimate based on diesel price of \$2.00 per litre and an average distance of 14000 km. Includes Road User Charges (RUC). Emissions and Energy Economy figures standardised to 3P WLTP.

Stock ID: 32017

Pearce Brothers

Pearce Brothers | Phone 09 250 1987 | Email ethan@pearcebrothers.co.nz
155 Cavendish Drive, Manukau, Auckland 2104, New Zealand
www.pearcebrothers.co.nz