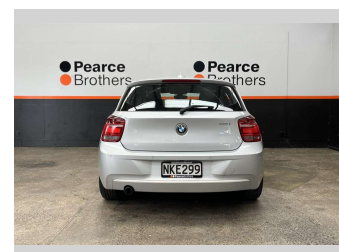
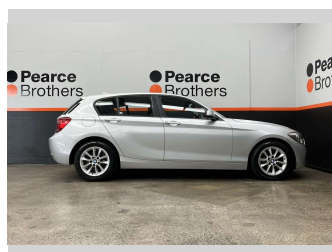
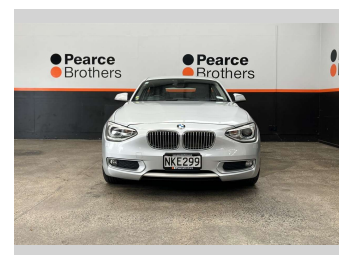


# 2015 BMW 116I FUEL SAVER, 1.6P, LOW KMS,



**Purchase Price** **\$10,990**  
Includes GST, Registration & Licensing

Finance may be available on this vehicle. Ask one of our friendly staff for more information.



Gain peace of mind with Mechanical Breakdown Insurance. **Ask us how.**



- Top features**
- » Air Bag(s)
  - » Air Conditioning
  - » Alloys
  - » Alloys
  - » Bluetooth
  - » Car Stereo
  - » Central Locking
  - » Central Locking
  - » Climate Control
  - » Digital Display
  - » Electric Mirrors
  - » Electric Mirrors
  - » Electric Windows
  - » Fog Lights
  - » LOW KMS
  - » Parking Sensors
  - » Power Steering
  - » Push Button Start

Body Style  
**Hatchback**

Odometer  
**75,287 km**

Engine  
**1590 cc**


Fuel Type  
**Petrol**

Transmission  
**Automatic**

Wheels  
-

VIN  
**WBA1A12080P578050**

Interior  
-

Safety  
  
Based on 2025 UCSR rating for 11-19 models

Reg No.  
**NKE299**

Ext Colour  
**Silver**

History  
**Ex-Overseas**

Seats  
**5 seats**

CO2 Emissions  
**★★★★☆**  
**160 grams/km**

Energy Economy  
**★★☆☆☆**  
**Annual fuel cost of \$2,670**  
**6.8L per 100km**

Cost per year is an estimate based on petrol price of \$2.80 per litre and an average distance of 14000 km. Emissions and Energy Economy figures standardised to 3P WLTP.

**Stock ID: 32765**



Pearce Brothers | Phone 09 250 1987 | Email ethan@pearcebrothers.co.nz  
155 Cavendish Drive, Manukau, Auckland 2104, New Zealand  
www.pearcebrothers.co.nz