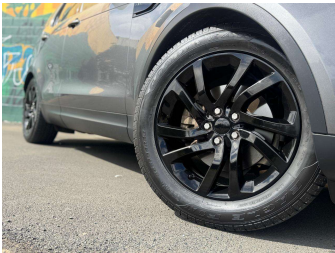


# 2018 Land Rover DISCOVERY TD6 HSE 3.0DT/4WD



Purchase Price

Includes GST, Registration & Licensing

\$36,995

Finance may be available on this vehicle. Ask one of our friendly staff for more information.



Gain peace of mind with Mechanical Breakdown Insurance. **Ask us how.**



Top features

None Listed

Body Style

5 door, SUV

Odometer

175,083 km

Engine

2993 cc, In-Line

Fuel Type

Diesel

Transmission

Automatic, 4WD

Wheels

-

VIN

SALRA2AK5JA0553LL

Interior

Black

Safety



Based on 2024 VSRR rating

Reg No.

-

Ext Colour

Grey

History

NZ New

Seats

7 seats, Leather

CO2 Emissions

★★★★☆☆

225 grams/km

Energy Economy

★★★★☆☆

Annual fuel cost of \$3,470  
8.6L per 100km

Cost per year is an estimate based on diesel price of \$2.00 per litre and an average distance of 14000 km. Includes Road User Charges (RUC). Emissions and Energy Economy figures standardised to 3P WLTP.

Stock ID: 37591



Pearce Brothers | Phone 09 579 6454 | Email [antoni@pearcebrothers.co.nz](mailto:antoni@pearcebrothers.co.nz)  
393 Neilson Street, Onehunga, Auckland 1061, New Zealand  
[www.pearcebrothers.co.nz](http://www.pearcebrothers.co.nz)