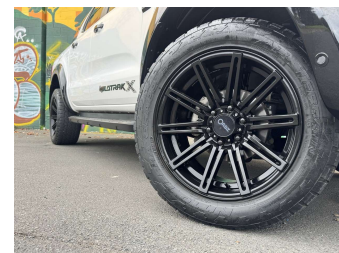


2021 Ford Ranger WILDTRAK, 4X4, BI-TURBO



Purchase Price **\$41,995**
Includes GST, Registration & Licensing

Finance may be available on this vehicle. Ask one of our friendly staff for more information.



Gain peace of mind with Mechanical Breakdown Insurance. **Ask us how.**



Top features

None Listed

Body Style
4 door, Ute

Odometer
74,652 km

Engine
1996 cc, In-Line

Fuel Type
Diesel


Transmission
Automatic, 4WD

Wheels
-

VIN
MPBUMFF60MX36536C

Interior
Black

Safety



Based on 2025 VSRR rating

Reg No.
NYH183

Ext Colour
white

History
NZ New

Seats
5 seats, Leather

CO2 Emissions
★★★☆☆☆
225 grams/km

Energy Economy
★★☆☆☆☆
Annual fuel cost of \$3,440
8.5L per 100km

Cost per year is an estimate based on diesel price of \$2.00 per litre and an average distance of 14000 km. Includes Road User Charges (RUC). Emissions and Energy Economy figures standardised to 3P WLTP.

Stock ID: 40504