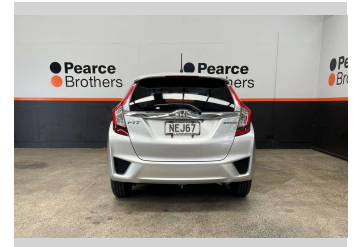
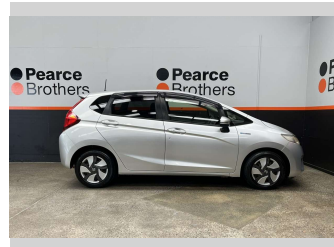
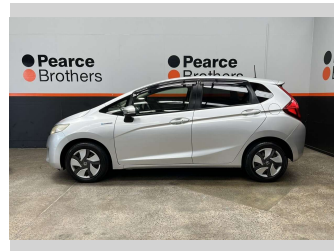
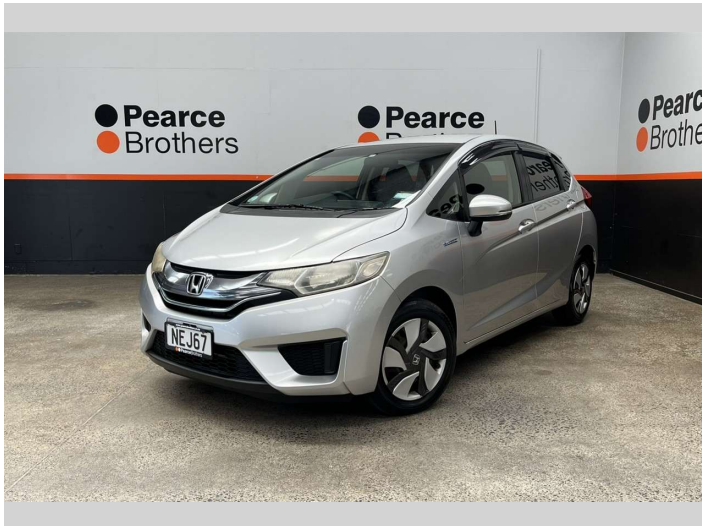


# 2014 Honda FIT 1.5L HYBRID, LOW KMS, FUEL



## Purchase Price

**\$9,990**

Includes GST, Registration & Licensing

Finance may be available on this vehicle. Ask one of our friendly staff for more information.



Gain peace of mind with Mechanical Breakdown Insurance. **Ask us how.**



## Top features

- » Air Bag(s)
- » Air Conditioning
- » Central Locking
- » Central Locking
- » Climate Control
- » Digital Display
- » Electric Mirrors
- » Electric Mirrors
- » Electric Windows
- » Hybrid
- » Keyless Entry
- » LOW KMS
- » Power Steering
- » Push Button Start
- » Remote Locking
- » Reverse Camera
- » Tinted Windows

## Body Style

**Hatchback**

## Odometer

**70,890 km**

## Engine

**1490 cc, Hybrid**

## Fuel Type

**Petrol**

## Transmission

**Automatic**

## Wheels

-

## VIN

**7AT08G2YX20089599**

## Interior

-

## Safety



Based on 2015 UCSR rating for 14-20 models

## Reg No.

**NEJ67**

## Ext Colour

**Silver**

## History

**Ex-Overseas**

## Seats

**5 seats**

## CO2 Emissions

★★★★☆

**92 grams/km**

## Energy Economy

★★★★☆

**Annual fuel cost of \$1,530  
3.9L per 100km**

Cost per year is an estimate based on petrol price of \$2.80 per litre and an average distance of 14000 km. Emissions and Energy Economy figures standardised to 3P WLTP.

**Stock ID: 32007**

**Pearce Brothers**

Pearce Brothers | Phone 09 250 1987 | Email [ethan@pearcebrothers.co.nz](mailto:ethan@pearcebrothers.co.nz)  
155 Cavendish Drive, Manukau, Auckland 2104, New Zealand  
[www.pearcebrothers.co.nz](http://www.pearcebrothers.co.nz)