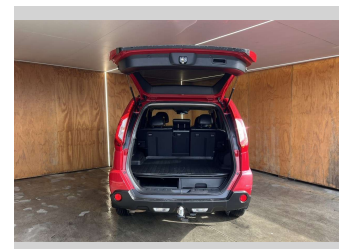
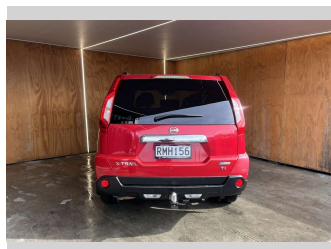
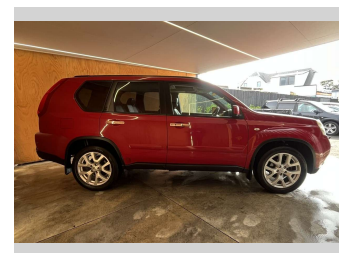
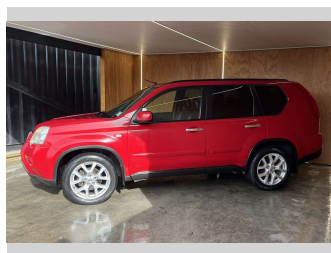



2010 Nissan X-Trail 2.5L PETROL, NZ NEW,



Purchase Price **\$6,990**
Includes GST, Registration & Licensing

Finance may be available on this vehicle. Ask one of our friendly staff for more information.

Gain peace of mind with Mechanical Breakdown Insurance. **Ask us how.**



Top features

- » 4WD/4x4
- » Adjustable 4X4
- » Air Bag(s)
- » Air Conditioning
- » All Wheel Drive
- » Alloys
- » Alloys
- » Car Alarm
- » Car Stereo
- » Central Locking
- » Central Locking
- » Climate Control
- » Cruise Control
- » Cruise Control
- » Driving Lights
- » Electric Mirrors
- » Electric Mirrors
- » Electric Windows

Body Style
SUV / 4x4

Odometer
166,049 km

Engine
2488 cc


Fuel Type
Petrol

Transmission
Automatic

Wheels
-

VIN
JN1TANT31A0103427

Interior
-

Safety

Based on 2025 UCSR rating for 07-14 models

Reg No.
RMH156

Ext Colour
Red

History
NZ New

Seats
5 seats

CO2 Emissions
★ ★ ☆ ☆ ☆ ☆
243 grams/km

Energy Economy
★ ☆ ☆ ☆ ☆ ☆
Annual fuel cost of \$3,960
10.1L per 100km

Cost per year is an estimate based on petrol price of \$2.80 per litre and an average distance of 14000 km. Emissions and Energy Economy figures standardised to 3P WLTP.

Stock ID: 33519



Pearce Brothers | Phone 09 250 1987 | Email ethan@pearcebrothers.co.nz
155 Cavendish Drive, Manukau, Auckland 2104, New Zealand
www.pearcebrothers.co.nz