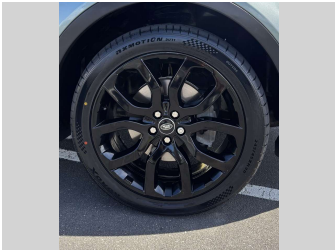


2016 Land Rover Range Rover Evoque TD4 HSE



Purchase Price

Includes GST, Registration & Licensing

\$26,975

Finance may be available on this vehicle. Ask one of our friendly staff for more information.



Gain peace of mind with Mechanical Breakdown Insurance. **Ask us how.**



Top features

None Listed

Body Style

5 door, SUV

Odometer

129,831 km

Engine

2179 cc, In-Line

Fuel Type

Diesel

Transmission

Automatic, 4WD

Wheels

-

VIN

SALVA2ACXGH142352

Interior

Black

Safety



Based on 2025 VSRR rating

Reg No.

RMZ628

Ext Colour

Grey

History

NZ New, 8 owners

Seats

5 seats, Leather

CO2 Emissions

★★★★☆

186 grams/km

Energy Economy

★★☆☆☆

**Annual fuel cost of \$3,020
7L per 100km**

Cost per year is an estimate based on diesel price of \$2.00 per litre and an average distance of 14000 km. Includes Road User Charges (RUC). Emissions and Energy Economy figures standardised to 3P WLTP.

Stock ID: 38367



Pearce Brothers | Phone 0800 080 061 | Email adam@pearcebrothers.co.nz
103 Great South Road, Papatoetoe, Auckland 2113, New Zealand
www.pearcebrothers.co.nz

