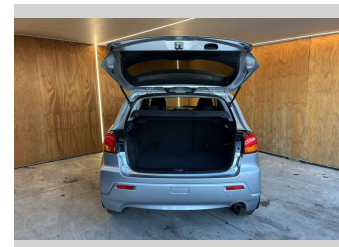
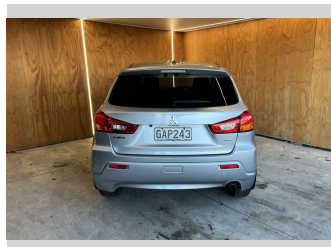
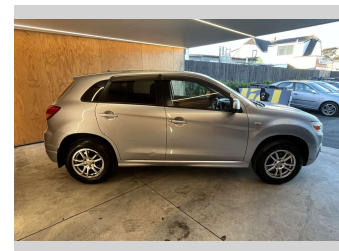
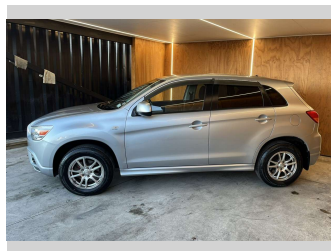
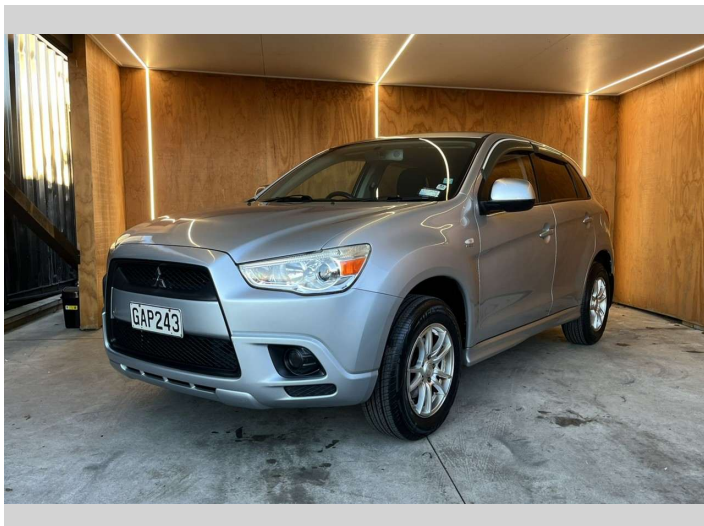



2011 Mitsubishi Asx 2.0L PETROL, AFTERMARKET



Purchase Price **\$8,990**
Includes GST, Registration & Licensing

Finance may be available on this vehicle. Ask one of our friendly staff for more information.



Gain peace of mind with Mechanical Breakdown Insurance. **Ask us how.**



Top features

- » Bluetooth
- » Central Locking
- » Central Locking
- » Climate Control
- » Driving Lights
- » Electric Mirrors
- » Electric Mirrors (Retr...
- » Electric Windows
- » Monsoon Guard
- » Power Steering
- » Rear Wiper
- » Remote Locking
- » Reverse Camera
- » Reverse Camera
- » Tinted Windows

Body Style
RV/SUV

Odometer
162,059 km

Engine
1998 cc


Fuel Type
Petrol

Transmission
Automatic

Wheels
-

VIN
JMFXTGA2WBZ005520

Interior
-

Safety

Based on 2025 UCSR rating for 10-16 models

Reg No.
GAP243

Ext Colour
Silver

History
NZ New

Seats
5 seats

CO2 Emissions
★ ★ ★ ★ ☆ ☆
212 grams/km

Energy Economy
★ ★ ☆ ☆ ☆ ☆
Annual fuel cost of \$3,450
8.8L per 100km

Cost per year is an estimate based on petrol price of \$2.80 per litre and an average distance of 14000 km. Emissions and Energy Economy figures standardised to 3P WLTP.

Stock ID: 33436