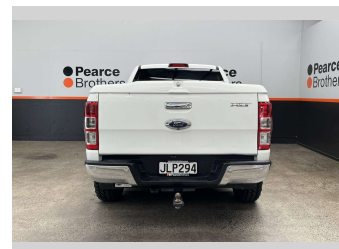
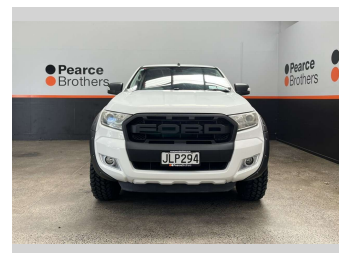
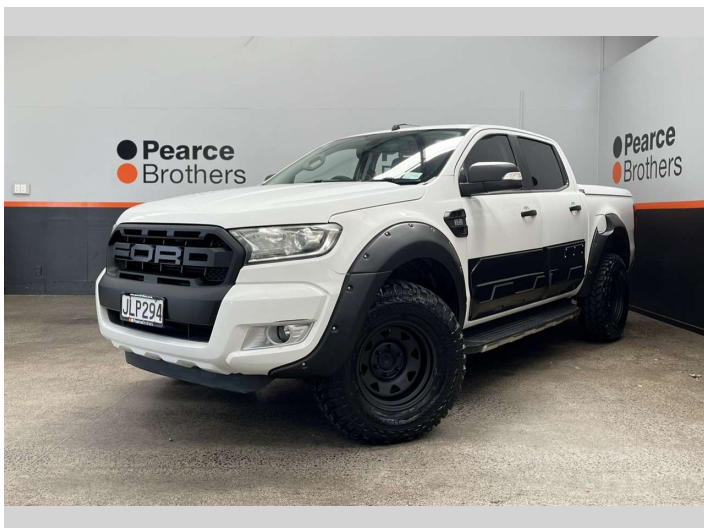


2015 Ford Ranger XLT, 3.2D, STEELIES, HARDLID



Purchase Price

\$22,990

Includes GST, Registration & Licensing

Finance may be available on this vehicle. Ask one of our friendly staff for more information.



Gain peace of mind with Mechanical Breakdown Insurance. **Ask us how.**



Top features

- » Air Bag(s)
- » Air Conditioning
- » Alloys
- » Alloys
- » Bluetooth
- » Car Stereo
- » Central Locking
- » Central Locking
- » Climate Control
- » Cruise Control
- » Cruise Control
- » Digital Display
- » Electric Mirrors
- » Electric Mirrors
- » Electric Windows
- » Fog Lights
- » NZ NEW
- » Parking Sensors

Body Style

4 door, Ute

Odometer

224,266 km

Engine

3198 cc, Diesel

Fuel Type

Diesel

Transmission

Automatic

Wheels

-

VIN

MNAUMFF50FW50XXXX

Interior

-

Safety



Based on 2025 VSRR rating

Reg No.

JLP294

Ext Colour

White

History

NZ New

Seats

5 seats

CO2 Emissions

★ ★ ☆ ☆ ☆ ☆

257 grams/km

Energy Economy

★ ★ ☆ ☆ ☆ ☆

Annual fuel cost of \$3,780
9.7L per 100km

Cost per year is an estimate based on diesel price of \$2.00 per litre and an average distance of 14000 km. Includes Road User Charges (RUC). Emissions and Energy Economy figures standardised to 3P WLTP.

Stock ID: 32172



Pearce Brothers | Phone 09 250 1987 | Email ethan@pearcebrothers.co.nz
155 Cavendish Drive, Manukau, Auckland 2104, New Zealand
www.pearcebrothers.co.nz