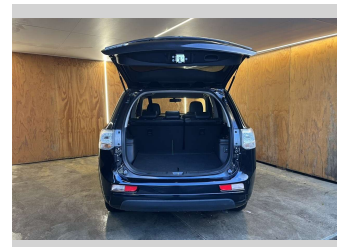
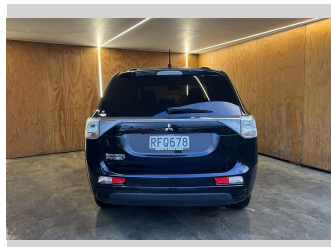
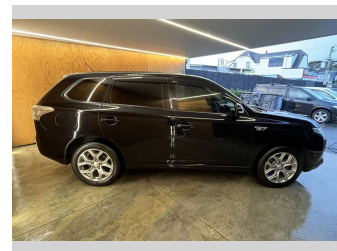
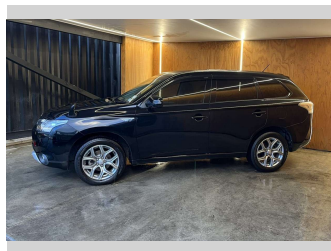
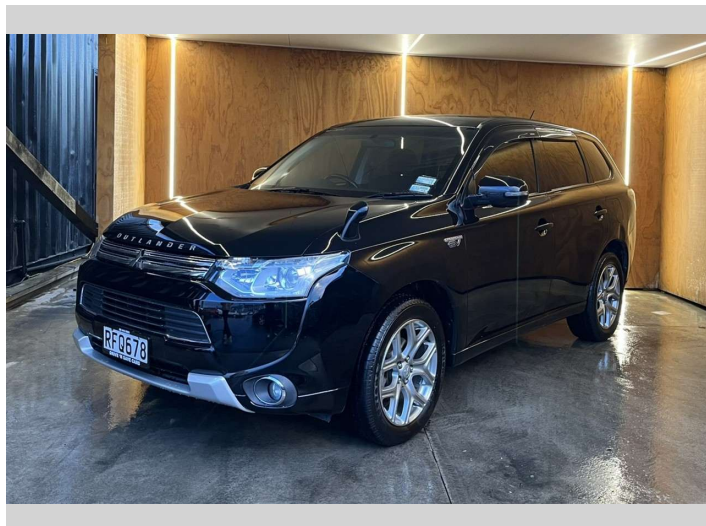



2015 Mitsubishi Outlander PHEV, 2.0L PETROL



Purchase Price **\$12,990**
Includes GST, Registration & Licensing

Finance may be available on this vehicle. Ask one of our friendly staff for more information.



Gain peace of mind with Mechanical Breakdown Insurance. **Ask us how.**



Top features

- » 4WD
- » 4WD/4x4
- » Alloys
- » Alloys
- » AUX
- » Bluetooth
- » Car Alarm
- » Car Stereo
- » Central Locking
- » Central Locking
- » Climate Control
- » Cruise Control
- » Cruise Control
- » Digital Display
- » Driving Lights
- » Electric Mirrors
- » Electric Mirrors (Retr...
- » Electric Windows

Body Style
RV/SUV

Odometer
96,169 km

Engine
1998 cc, Plug-In Hybrid


Fuel Type
Petrol

Transmission
Automatic

Wheels
-

VIN
7AT0CJ3MX24106224

Interior
-

Safety

Based on 2025 UCSR rating for 12-21 models

Reg No.
RFQ678

Ext Colour
Black

History
Ex-Overseas

Seats
5 seats

CO2 Emissions
★★★★☆
43 grams/km

Energy Economy
★★★★☆☆
Annual fuel cost not available
6.1L per 100km

Actual figures and cost per year will vary based on proportion of hybrid mode driving and battery charging schedule. Emissions and Energy Economy figures standardised to 3P WLTP.

Stock ID: 33496