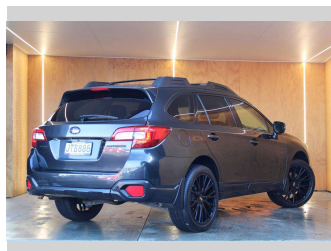
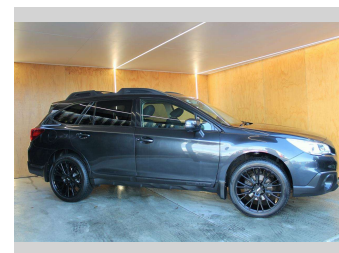
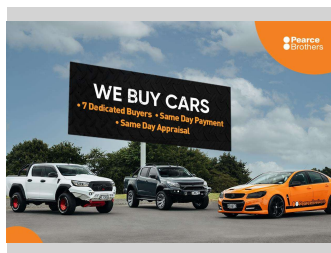
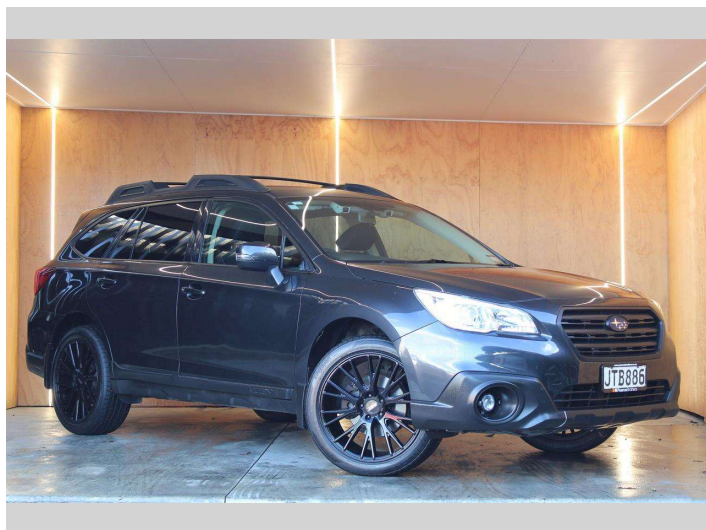



2016 Subaru OUTBACK 2.5P 4WD BLACKED OUT NZ




Purchase Price **\$16,990**
Includes GST, Registration & Licensing

Finance may be available on this vehicle. Ask one of our friendly staff for more information.



Gain peace of mind with Mechanical Breakdown Insurance. **Ask us how.**



Top features
None Listed

Body Style
5 door, Station Wagon

Odometer
145,968 km

Engine
2498 cc, Internal Combustion


Fuel Type
Petrol

Transmission
Automatic, 4WD

Wheels
-

VIN
JF2BS9KC2GG035656

Interior
-

Safety

Based on 2023 UCSR rating for 14-20 models

Reg No.
JTB886

Ext Colour
Grey

History
NZ New

Seats
5 seats

CO2 Emissions
★★★★☆
186 grams/km

Energy Economy
★★☆☆☆☆
Annual fuel cost of \$3,180
8.1L per 100km

Cost per year is an estimate based on petrol price of \$2.80 per litre and an average distance of 14000 km. Emissions and Energy Economy figures standardised to 3P WLTP.

Stock ID: 26031